



ZEBRA

**UNIQUE
MICRO
DESIGN**
...Engineering IoT Solutions

2025 PORTFOLIO GUIDE







YOU THOUGHT YOU KNEW ZEBRA. BUT THERE'S SO MUCH MORE TO SEE.

For more than 55 years, Zebra has delivered innovative solutions and technologies which help organisations to manage their inventories and activities—from barcode printers and scanners, to RFID tags and readers, to mobile and wearable computers, to enterprise software and more, all backed by a robust services portfolio.

Many of our customers have come to depend on Zebra products for their day-to-day operations and year-to-year success.

Every business in every industry will find innovations in our portfolio which will help them to operate more efficiently and effectively. Products designed to improve visibility and decision-making. Solutions for achieving sustainability and regulatory compliance.

When our innovation story turned the page to AI, we built it on the foundation of our 55 years of expertise. By innovating products and software that are already proven, we are leveraging AI specifically to improve frontline work.

Examine your capabilities today and consider how you want your business to grow, then ask UMD how we can help you get there. UMD equipped with the local knowledge, deep capabilities and industry experience required to deliver real value to your business. Following extensive Zebra certification training, UMD is an authorised RFID specialist supporting and selling the complete range of Zebra RFID solutions; Mobile (TC, RFD), Fixed (FX, RE, FXR), Enterprise (ATR, ZSL)

TABLE OF CONTENTS

[A Performance Edge in Any Environment](#)

[Zebra DNA](#)

[Barcode Scanners](#)

- 10 General Purpose Scanners
- 12 Industrial Scanners
- 13 Single-Plane and Multi-Plane Scanners

[Mobile Computers, Tablets and Interactive Kiosks](#)

- 14 Handheld Computers
- 18 Interactive Kiosks
- 20 Wearable Computers and Devices
- 22 Rugged Enterprise Tablets
- 23 Healthcare Tablets
- 23 Vehicle-Mounted Computers
- 24 Mobile Computer Accessories

[Mobile Software](#)

- 26 Mobile Computer Software Solutions
- 27 Zebra Guardian Portfolio*

[Printers](#)

- 28 Industrial Printers
- 30 Desktop Printers
- 32 Mobile Printers
- 34 Card Printers
- 36 Printer Accessories

[Printing Supplies](#)

- 38 Printing Supplies

[Environmental Sensors](#)

- 39 Electronic, Visual and Printable Environmental Sensors

[Healthcare Technology Solutions](#)

- 40 Mobile Computers and Tablets
- 42 Scanners
- 44 Printers

[RFID Technology](#)

- 46 Handheld RFID Readers and RFID-Enabled Devices
- 48 Fixed RFID Readers and Infrastructure
- 50 Integrated RFID Portals*
- 52 Antennas
- 54 RFID Printers/Encoders
- 56 Reader Software
- 58 Location Technologies
- 59 Zebra MotionWorks™ Sport

[Fixed Industrial Scanners](#)

- 60 Fixed Industrial Scanners

[Machine Vision](#)

- 62 Smart Sensors and Cameras
- 64 3D Sensors
- 64 Industrial Vision Controllers
- 64 Machine Vision Cameras
- 65 Frame Grabbers
- 65 I/O Cards
- 66 Zebra Aurora™ Software Suite

[Environmental Responsibility and Sustainability](#)

[Autonomous Mobile Robots*](#)

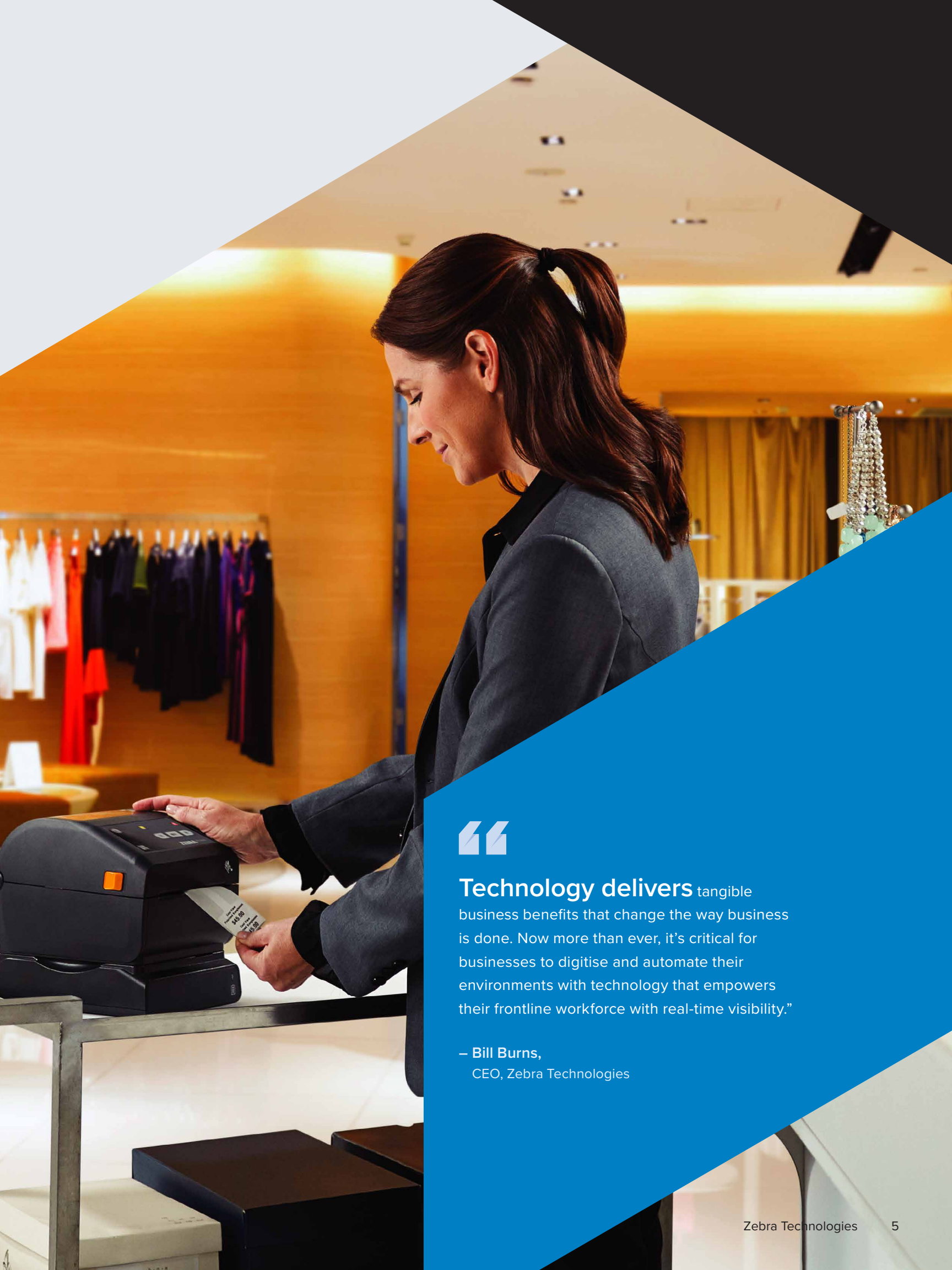
- 68 Zebra AMRs
- 69 Symmetry Software

[Software Solutions](#)

- 70 Workcloud Workforce Optimisation Suite
- 71 Workcloud Enterprise Collaboration Suite
- 72 Workcloud Inventory Optimisation Suite
- 73 Workcloud Demand Intelligence Suite

[Services](#)

- 74 Zebra OneCare Maintenance Plans
- 74 VisibilityIQ™ Foresight
- 74 Professional Services
- 74 Device Managed Services
- 74 Circular Economy*



Technology delivers tangible business benefits that change the way business is done. Now more than ever, it's critical for businesses to digitise and automate their environments with technology that empowers their frontline workforce with real-time visibility."

— Bill Burns,
CEO, Zebra Technologies

A PERFORMANCE EDGE IN ANY ENVIRONMENT



TRANSPORTATION AND LOGISTICS

Deliver non-stop service from the first mile to the last.



MANUFACTURING

Increase productivity and profitability on the plant floor.



HEALTHCARE

Streamline care delivery with enhanced workflows and reduced workarounds.



RETAIL

Accelerate retail transformation and improve customer experiences.



HOSPITALITY

Enhance guest experience and increase operational efficiency.



WAREHOUSING

Manage inventory across your supply chain.



FIELD SERVICE AND UTILITIES

Empower your team wherever the job takes them.



GOVERNMENT AND PUBLIC SAFETY

Improve services and safety.





ZEBRA DNA



Behind every great piece of hardware is an even better set of software tools. Learn more about Zebra DNA.

Set Up. Secure. Manage. Optimise.

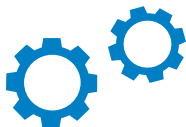
With advances in technology continuously accelerating, it's the software inside your Zebra devices which determines whether they remain relevant, agile and high-performing with a strong ROI over their entire lifecycle. That's why Zebra devices come with a built-in advantage: **Zebra DNA**.

Made of applications, utilities and tools, Zebra DNA is what delivers the unmatched experiences your team gets from Zebra mobile computers, scanners and printers. With Zebra DNA, you can address all that's known and unknown on the road ahead.



Fleet Insights

Pre-empt problems with device diagnostics to increase productivity and improve ROI.



Optimal Uptime

Simplify device management with tools to increase accuracy and reduce delays.



Flexible Workflow Performance

Adapt Zebra devices to your network, environment or workflow with purpose-built software and APIs that unlock operational efficiency.

SET UP

Stage and deploy devices rapidly, with the power to easily create and integrate apps for multiple workflows.

SECURE

Give IT the ability to protect your systems from emerging cyber threats.

MANAGE

Convenient remote management to protect fleet uptime and worker productivity.

OPTIMISE

Tailor device capabilities to your needs, enabling workers to complete more tasks in less time.

We have committed decades to researching and developing Zebra DNA. We've run thousands of simulations and studied even more real-world use cases to understand the journey each Zebra device will take once it leaves our manufacturing facilities and warehouses.





General Purpose Scanners

Jobs may differ, but workers' needs remain the same: split-second, fail-proof, error-proof scanning. Give them scanners made to increase productivity, no matter what their environment or challenge.



Use our Scan Selector tool to find out which barcode scanners are right for your specific industry, environment and requirements.



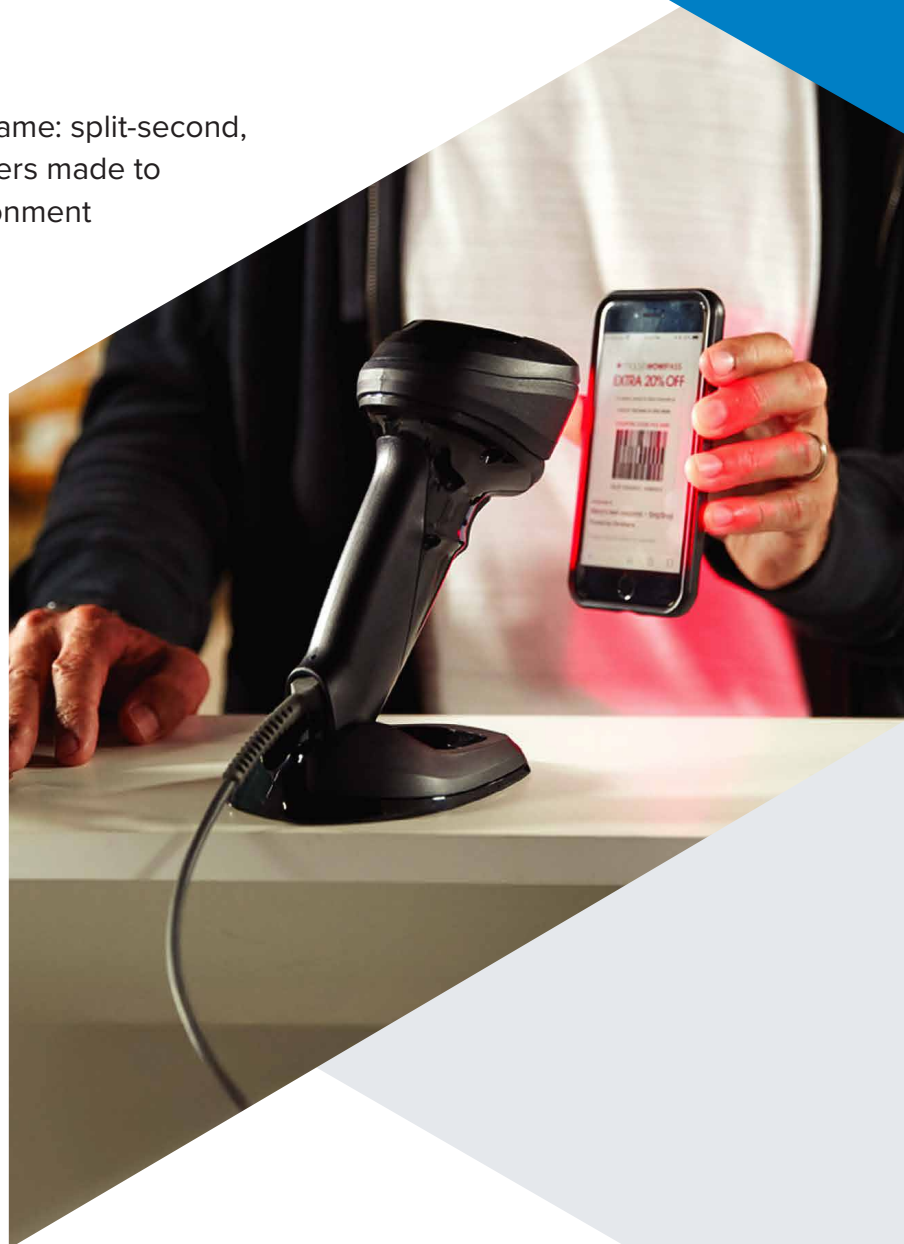
DS9900 Series Hybrid Handheld/ Hands-Free 1D/2D Scanner

One-of-a-kind hybrid design

Maximum flexibility and superior comfort, designed to boost productivity at the POS.

- Hybrid design offers handheld and hands-free flexibility
- Supports Digimarc™ to speed-up checkout
- Elevated electronics protect the device from casual spills

INDUSTRY MARKET:



DS55 Series Fixed Mount Scanners

Proven scanning performance in a compact, fits-anywhere design.

- Megapixel sensor delivers 184% higher resolution than the previous generation DS457 for superior performance on damaged and poorly printed barcodes
- Innovative 3-in-1 mount accessory is a computer mount, wall mount and presentation stand all in one

INDUSTRY MARKET:





For more information, visit www.zebra.com or contact a sales associate.



DS2200 Series Handheld 1D/2D Scanners

The benefits of 2D imaging at an outstanding value with minimal investment.

- Corded and cordless models
- Average 21% faster for a variety of checkout tasks compared to similar models*

INDUSTRY MARKET:



DS4600 Series Handheld 1D/2D Scanners

Keep checkout lanes, manufacturing lines and warehouses running smoothly.

- A model for every need in your organisation
- 14% faster scanning through plexiglass during checkout compared to the nearest competitor*

INDUSTRY MARKET:



DS8100 Series Handheld 1D/2D Scanners

Ideal for retailers willing to invest in increasing transactions per shift and reducing customer wait time.

- Choice of desktop or presentation cradle
- Up to 33% faster scanning in handheld mode compared to similar models*

INDUSTRY MARKET:



DS9300 Series Hands-Free 1D/2D Scanners

A fit-anywhere form factor coupled with stylish aesthetics.

- Designed for hands-free scanning but can be handheld
- Compact form factor ideal for limited checkout counter space

INDUSTRY MARKET:



CS60 Companion 1D/2D Scanner

Easily converts between corded and cordless, hands-free and handheld operation.

- One device can be used for multiple workflows
- Pocketable and wearable when mobility is essential

INDUSTRY MARKET:



When you choose

Zebra barcode scanners, your workers get the performance, comfort and ease of use they need to get the job done right—and fast.

Zebra DNA for Scanners

covers every stage of your scanning workflows, ensuring that your scanners evolve with your business needs.





Industrial Scanners

Our product design teams work alongside customers like you, observing how they use scanners in warehouses, retail stores and manufacturing plants. From our rich insights, we designed scanners built to elevate your performance.



DS3600 Series Ultra-Rugged Barcode Scanners

Be unstoppable with relentless performance

Takes a beating and still scans faster and further.

- Coded and cordless models
- Multiple data capture models: standard range, high density, DPM, extended range and more
- Built to withstand extreme heat, cold and humidity
- IP65 and IP68 sealing

INDUSTRY MARKET:



Zebra scanners have been developed and refined through more than **55** years of field-proven innovation, with options for every purpose and price point.





Single-Plane and Multi-Plane Scanners



MP72 Multi-Plane 1D/2D Scanner

Redefine the checkout experience with unmatched speed and unrivalled innovation.

- Maximise checkout speed with a wide field of view
- Future-ready with optimised 2D and GS1 Digital Link performance

INDUSTRY MARKET:



SP72 Series Single-Plane Scanners

Speed up and simplify your checkout line experience with in-counter and on-counter scanning.

- Best-in-class scan performance with PRZM Intelligent Imaging Technology
- 2MP colour camera option to enable vision-based applications

INDUSTRY MARKET:



MP7000 Multi-Plane 1D/2D Scanner

Bust lines with next-generation POS scanning, colour camera imaging and live video.

- Digimarc™ barcode support
- Image capture capability for checks, receipts, utility bills and more

INDUSTRY MARKET:

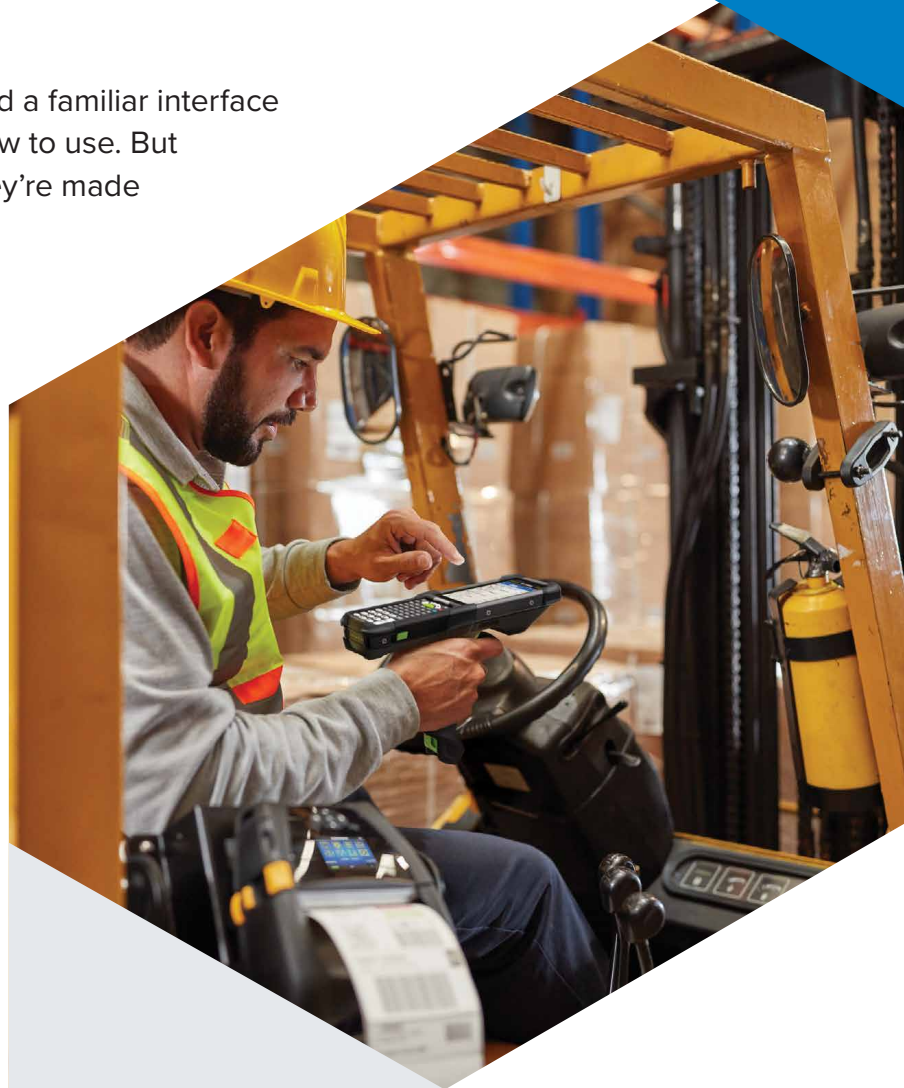




MOBILE COMPUTERS, TABLETS AND INTERACTIVE KIOSKS

Handheld Computers

So smart, these multi-taskers speed up work. And a familiar interface is one you'll immediately recognise and know how to use. But unlike consumer devices, they won't fail you. They're made for work—enterprise-rugged and ultra-secure.



MC9400/MC9450 Mobile Computers

The next evolution loaded with the latest mobile technologies

With the new Qualcomm platform offering 2.5x more processing power and 50% more RAM than the MC9300.

- With the new SE58 Extended Range Scan Engine with Intellifocus™ technology, scan barcodes in hand and over 100 feet (30.5 metres) away.*
- New optional 7,000 mAh BLE-enabled battery to locate lost devices even when powered down or low in battery.
- The latest in wireless connectivity with Wi-Fi 6E and 5G data-only mobile.
- Fully backward compatible with all MC9300 accessories without the need for adapters or replacements of any kind.

INDUSTRY MARKET:



* Printing resolution, contrast and ambient light dependent.

Mobile technology

has become almost mandatory in every industry worldwide. Every worker, regardless of their job, is now expected to be connected.





MC3400/MC3450 Mobile Computers

Engineered for the toughest environments and today's modern workflows—now with more power, advanced scanning, Wi-Fi 6E and 5G connectivity.

- Two form factor options—straight shooter and gun
- Three keypad options with larger keys and more space between them
- 2.5x more processing power

INDUSTRY MARKET:



MC3300ax Mobile Computer

The highly successful and widely adopted MC3000 series delivers unmatched versatility and flexibility.

- Two form factors: straight shooter, gun/pistol grip
- Three different keypad options: numeric, function numeric, alphanumeric

INDUSTRY MARKET:



MC3300x Mobile Computer

Advanced platform and enhanced durability designed to improve productivity and efficiency.

- Powerful 2.2 GHz octa-core processor
- Multiple keypad options and four form factor options

INDUSTRY MARKET:



MC2200/MC2700 Mobile Computers

Affordable and versatile mobility for any worker, anywhere.

- Wi-Fi and mobile to connect workers
- Two devices in one—brick and gun

INDUSTRY MARKET:



TC8300 Mobile Computer

Revolutionary enterprise mobile computer designed to boost productivity and reduce user fatigue.

- Advanced industrial barcode scanning, from 3 inches to 70 feet
- Supports ease of Android migration with All-Touch Terminal Emulation

INDUSTRY MARKET:



Zebra DNA for Mobile Computers
keeps your devices updated and
optimised for peak performance.





MOBILE COMPUTERS, TABLETS AND INTERACTIVE KIOSKS

Handheld Computers *(Continued)*

When you choose Zebra, you're in good company. Many of the world's largest organisations trust Zebra enterprise mobile computers to keep their businesses going, including many Fortune 500 companies.



TC53e/TC58e/TC53e-RFID Mobile Computers

The newest models in Zebra's popular TC5 Series, these devices are designed to be more sustainable and meet the evolving mobility needs of today's frontline workers.

- Secure Element support improves power and security
- Wi-Fi 6E, 5G (2nd Gen), Private 5G, CBRS
- Choice of three scan engines
- Integrated short-range UHF RFID (TC53e-RFID only)

INDUSTRY MARKET:



PS30 Personal Shopper

Improve shopper experiences and drive customer loyalty with this all-new scan-as-you-shop solution.

- Flowing modern ergonomics
- Tap-to-pay and digital wallet-ready
- Enhanced location sensor data for actionable shopper analytics

INDUSTRY MARKET:





TC22/TC27 Mobile Computers

Ergonomic and lightweight styling and pricing with big business features which boost productivity and customer service quality.

- Choice of standard or advanced range scanner, Wi-Fi 6/6E, 5G, CBRS
- Value-adds: workstation, POS, RFID, digital wallets and tap-to-pay ready

INDUSTRY MARKET:



TC52ax Mobile Computer

The ultimate in rugged enterprise-class mobile computers with innovative features for indoor and outdoor use.

- High-resolution 5-inch Full HD touch screen
- Choice of standard or advanced range scanner
- Wi-Fi 6

INDUSTRY MARKET:



TC72/TC77 Mobile Computers

A smartphone experience for maximum simplicity, designed to withstand years of the toughest use.

- 15-hour battery power; full battery statistics
- Withstands multiple 6-foot (1.8-metre) drops to concrete at room temperature

INDUSTRY MARKET:



TC15/TN28 Mobile Computers*

Rugged mobile computer with a new level of affordability built for your supply chain.

- 5G, ultra-long-lasting battery, superb ergonomics
- Integrated scanner and 6.5-inch bright screen

INDUSTRY MARKET:



TC53/TC58 Mobile Computers

A new generation of Zebra mobile computers designed to do more with new hardware and software innovations which redefine mobile computing performance.

- Advanced 6-inch Full HD+ edge-to-edge display
- Withstands multiple 5-foot (1.5-metre) drops to tile over concrete across temperature range
- Four battery options: standard, extended capacity, BLE and wireless charge
- True Hot Swap
- Wi-Fi 6E, 5G

INDUSTRY MARKET:



TC73/TC78 Mobile Computers

Ultra-rugged Wi-Fi 6E/5G mobile computers re-imagined to support the new generation of mobile solutions.

- Withstands multiple 10-foot (3.05-metre) drops to concrete at room temperature
- Advanced 6-inch Full HD+ edge-to-edge display
- Four battery options: standard, extended capacity, BLE and wireless charge

INDUSTRY MARKET:



EM45 RFID Enterprise Mobile

Ultra-thin and lightweight—two in one for personal productivity—smartphone ergonomics, built-in RFID and enterprise functionality in one device.

- 5G, Wi-Fi 6E, 6.7-inch bright screen
- Integrated short-range UHF RFID
- 5,000 mAh ultra-long-lasting battery

INDUSTRY MARKET:



* Available in select countries. TN28 available in China only.



Interactive Kiosks

When you need the functionality of a tablet without the need for mobility, these fixed, Android-based kiosks elevate customer engagement, offering convenient self-service options customers expect.

Zebra Kiosk System

Delivering excellence in self-service, assisted service and digital signage.

Exceptional consumer design

- Inviting and intuitive design
- Multi-touch bright screen and voice support
- Accessibility compliant

Complete flexibility

- Choose your size, orientation and peripherals
- Mount anywhere—wall, desk, counter and floor—with Universal VESA 75 and VESA 100 mounts
- Power over Ethernet (PoE) for easy installation
- Z-Flex Connectors to instantly add an LED lightbar and SE4720 scanner

Unmatched manageability

- Comprehensive control over kiosk hardware via your EMM
- Powerful cloud-based content management
- Easy to set up, secure, manage and optimise with Zebra DNA

All-day, everyday reliability

- Built-in durability
- Sealed and ball impact tested
- Maximise uptime with Zebra OneCare support plans

INDUSTRY MARKET:





For more information, visit www.zebra.com or contact a sales associate.



KC50 Kiosk Computer

The heart of the Zebra Kiosk System

Designed for consumers and built for business with ultimate flexibility.

- 15-inch or 22-inch, portrait or landscape
- Android, Qualcomm® 5430, 2.1 GHz Octa Core
- Wi-Fi 6E
- Voice and digital assistant support
- NFC payment and digital wallet ready

INDUSTRY MARKET:



CC600 5-inch Multi-Touch Kiosk

Bring convenience, speed and customer satisfaction to shopping by enabling self-service in every aisle.

- Quickly install Android app availability wherever it is needed
- Supports Wi-Fi, Bluetooth® and Ethernet
- Compact, affordable and easy to install with floor-facing 2D scanner

INDUSTRY MARKET:



* According to blog post written by Mike Withers, July 2021, citing a Bain & Company report.

Kiosks increase

the average retail transaction value by **30%** and decrease waiting times during pickup and return transactions.*



CC6000 10-inch Customer Concierge Kiosk

Gain tablet-like performance and connectivity for fixed installations.

- Use for digital signage, product demos or Android interactive apps
- Integrated 2D scanner and Full HD camera for remote video chat
- Supports Wi-Fi, Bluetooth, NFC and Ethernet
- Mount horizontally or vertically with floor-facing 2D scanner

INDUSTRY MARKET:



Transportation & Logistics



Warehousing



MOBILE COMPUTERS, TABLETS AND INTERACTIVE KIOSKS

Wearable Computers and Devices

The rush is on. Free up your workers to handle more, and watch their accuracy and productivity skyrocket. Hands down, these are the best hands-free solutions.



WS50 Android Wearable Computer

World's smallest all-in-one Android enterprise-class wearable mobile computer

First-of-its-kind, rugged, enterprise display improves productivity and task accuracy. Also available with a UHF reader for RFID needs.

- One-piece wearable; workers only need to wear one device to capture and access data, instead of a host mobile computer and ring scanner
- With different wearing styles: on the wrist, two fingers, or the back of the hand
- Android OS AOSP
- Advanced enterprise-class scanner
- Integrated audio and PTT hardware ready

INDUSTRY MARKET:



HS3100/HS2100 Headsets

Rugged Bluetooth and corded HD voice headsets built for the most demanding industrial environments.

- Superior noise-cancellation technology
- HD voice for superior audio clarity and quality

INDUSTRY MARKET:



The only way people

can move as fast as humanly possible in a warehouse is if they have their hands totally free to pick items, pack and pick up boxes, operate equipment and more."

— Samuel Gonzales,
Director of Global Systems
and Solutions, Ivanti





WT6400 Wearable Computer

Increase workflow efficiency and workforce productivity with the next generation in hands-free wearable computing.

- Large 4.7-inch display screen size
- Uninterrupted operation down to $-30^{\circ}\text{C}/-22^{\circ}\text{F}$ with extended battery

INDUSTRY MARKET:



WT5400 Wearable Computer

Bringing all-day hands-free comfort and productivity to retail workflows.

- Wi-Fi 6E wireless connectivity
- Large 4.7-inch display screen size

INDUSTRY MARKET:



WT6300 Wearable Computer

Hands-free wearable computer empowers your workers to keep pace with the e-commerce explosion.

- Flexible data entry with touchscreen or detachable keypad accessories
- Built rugged for use in any environment, including the freezer ($-30^{\circ}\text{C}/-22^{\circ}\text{F}$)

INDUSTRY MARKET:



RS2100 Bluetooth Ring Scanner

The world's smallest and lightest enterprise wearable scanner.

- Bare palm grip capability
- Compatible with Device Tracker to prevent misplacement

INDUSTRY MARKET:



RS5000 1D/2D Corded Ring Scanner

Single-finger corded ring scanner enables hands-free scanning.

- Advanced scanning technology and PRZM Intelligent Imaging
- Capture barcodes from near contact to over 25 inches (63.5 cm)

INDUSTRY MARKET:



RS5000x Corded Ring Scanner

High-performance 1D/2D scanning from the warehouse freezer to the retail floor.

- Ideal for grocery and pharmaceutical supply chains in operating temperatures down to $-30^{\circ}\text{C}/-22^{\circ}\text{F}$
- SE4770 1D/2D scan engine offers exceptional motion tolerance

INDUSTRY MARKET:



RS5100 Bluetooth Ring Scanner

Single-finger Bluetooth ring scanner enables hands-free mobility, giving workers comfort.

- Advanced scanning technology and PRZM Intelligent Imaging
- Multiple trigger options: single trigger, double trigger or top trigger

INDUSTRY MARKET:



RS6100 Bluetooth Ring Scanner

The industry's most advanced, most rugged Bluetooth ring scanner.

- Multi-colour LED line-of-sight sorting
- Advanced scanning technology and PRZM Intelligent Imaging

INDUSTRY MARKET:





MOBILE COMPUTERS, TABLETS AND INTERACTIVE KIOSKS

Rugged Enterprise Tablets

Price checks. Inventory lookup. Line busting. Patient engagement.
Pre-trip checklist. Real-time route updates. GIS or CAD software.
Proof of delivery. Every feature and form factor was added
to help you to succeed at your job, inside the four walls
and outside in the harshest environments.



Use our tablet selector
tool to find the right
tablets for your
industry, environment
and workflows.



ET60W/ET65W Rugged Windows Enterprise Tablets

**AI-driven tablets delivering unmatched
performance and productivity**

These tablets redefine workforce productivity and business efficiency with embedded AI technology and platform built to run intensive AI applications.

- Windows OS, 10-inch screen, optional integrated scanner
- Embedded with AI-powered touchscreen and audio and AI-ready processor
- Use as a tablet, 2-in-1 or vehicle-mount computer
- Rugged for the most demanding environments
- Fastest wireless connectivity (ET60W: Wi-Fi 7; ET65W: Wi-Fi 7 and 5G)

INDUSTRY MARKET:



ET60/ET65 Rugged Android Enterprise Tablets

The most versatile and rugged Android business tablets.

- Android OS, 10-inch screen, optional integrated scanner
- Use as a tablet, 2-in-1, or vehicle-mount computer
- Rugged for the most demanding environments, including the freezer
- Fast wireless connectivity (ET60: Wi-Fi 6E; ET65: Wi-Fi 6E and 5G)

INDUSTRY MARKET:





ET40/ET45 Rugged Enterprise Tablets

Right-priced tablets which have it all right out of the box.

- Android OS, 8-inch or 10-inch screen, integrated scanner
- Fully rugged with consumer-style design
- Fast wireless connectivity (ET40: Wi-Fi 6; ET45: Wi-Fi 6 and 5G)

INDUSTRY MARKET:



ET80/ET85 Rugged 2-in-1 Windows Tablets

Dependable 12-inch tablets created for workers the world depends on.

- Rugged, yet thinner and lighter than major 2-in-1 competitors
- Two devices in one: standalone tablet and true laptop replacement
- Fast wireless connectivity (ET80: Wi-Fi 6E; ET85: Wi-Fi 6E and 5G)

INDUSTRY MARKET:



Healthcare Tablets



ET40-HC/ET45-HC Rugged Healthcare Tablets

Built to meet the demands of healthcare and your budget.

- Android OS, 10-inch screen, integrated scanner
- Emergency alert programmable button
- Advanced medical-grade disinfectant-ready plastics with fully rugged consumer-style design
- Fast wireless connectivity (ET40-HC: Wi-Fi 6; ET45-HC: Wi-Fi 6 and 5G)

INDUSTRY MARKET:



Vehicle-Mounted Computers



VC8300 Vehicle-Mounted Computers

Android keyboard/touch vehicle mount computer designed for the most extreme environments.

- Flexible data entry with integrated full alphanumeric keyboard
- Supports ease of Android migration with Terminal Emulation
- Configure Zebra scanners with the VC8300 to accelerate staging

INDUSTRY MARKET:





Mobile Computer Accessories

Don't keep customers waiting. Turn your mobile computer into a do-it-all mobile solution that works faster. Whatever you need to simplify and speed up your day, we have it. With enterprise-class accessories ranging from Workstation Connect cradles and hubs, to RFID adapters and trigger handles, you can convert your mobile devices to workstations, POS stations, RFID readers or advanced-range scanners for warehouse use.



Carrying Solutions

Carry the day

Get a firm grip on work with belt clips, holsters, hand mounts, or shoulder and hand straps which keep mobile devices handy. Choose from a wide range of sizes for maximum comfort. They're made to perform in your rugged environments.



Power Supplies

Charge ahead

Ensure all-day power, every day. Keep going with 24/7 Extension Back PowerPacks, warm and hot swap internal batteries, charging cradles, and cables.



Docks, Cradles and Mounts

When productivity is the destination

Develop a comprehensive plan with our versatile docking and mounting solutions for any application—from forklifts to patrol vehicles. Choose from Zebra and third-party options, including office, industrial and vehicle mounts, as well as cradles and docks for warehouse, manufacturing and retail environments, ensuring efficient device charging and storage.



PowerPrecision Batteries

Built for durability and performance

The last thing you want is to run out of power in the middle of work. PowerPrecision batteries give you non-stop performance, because they're made to meet rigorous standards. Add to that PowerPrecision Management, and you have insight into your batteries' health and status. So you can start your day fully charged.



And Then Some

Expand choices; expand capabilities

With this much versatility, there are accessories for every application. Ask us about our styluses, antennas, headsets, speakers, mobile payment options, screen protectors and more.

Increase Productivity and Reduce Costs in Your Packing Stations



Bluetooth Adapter

Pair up to seven Zebra scanners to a Bluetooth adapter, and allow packers to quickly and easily capture barcodes on the tote (and all the items in a tote) to ensure 100 percent accuracy in order fulfillment—before the box is sealed.



Two-bay Charger

Packers no longer need to leave their stations to change a battery—batteries and wearable scanners can be charged right at the packing station.





Mobile Computer Software Solutions

Save in management costs whilst increasing the collaboration and performance of your employees, security and network with software designed to enhance Zebra's mobile device solutions.

Zebra DNA for Mobile Computers

True mobility designed to complete work faster, smarter and better inside or outside of your four walls. With hardware and software seamlessly integrated, Zebra helps to ensure continuous operations and optimal uptime in any environment, plus easy adaptability to changing workflows.

INDUSTRY MARKET:



Zebra Pay™

Zebra Pay is the industry's first integrated enterprise-class SPoC-based mobile payment solution, enabling enterprises to accept all major card brands, anywhere, on compatible Zebra mobile devices. This EMV L3-certified cloud-based solution supports tap-to-pay, chip and magstripe, complete with PIN entry on Zebra mobile computers and tablets.

INDUSTRY MARKET:



Zebra Workstation Connect

Transform Zebra mobile computers and tablets into mobile-driven workstations and POS stations on demand. The same Zebra mobile device which workers use to complete many tasks throughout the day, can also power a fully featured workstation or POS, driving costs and energy usage down—and the value of Zebra mobile devices up.

INDUSTRY MARKET:



Zebra Dimensioning™

Zebra Dimensioning Certified Mobile Parcel captures accurate parcel dimensions and calculates shipping charges on Zebra mobile computers with a press of a button. And Mobile Parcel is ideal when you need visibility into parcel dimensions to improve load planning and warehouse space optimisation.

INDUSTRY MARKET:





Zebra Guardian Portfolio*

Zebra is uniting four key software solutions under the new Zebra Guardian umbrella to simplify access to a comprehensive suite. The Zebra Guardian portfolio offers secure device log-in, access control, device recovery, and loss and theft prevention, ensuring employees have ready-to-use devices at the start of each shift. This move enhances capabilities, making it easier to customise secure access to meet specific business needs.

INDUSTRY MARKET:



Identity Guardian

Leverage facial biometrics and SSO compatibility for simple, convenient and secure device and application access, supporting both shared and personal device deployments.

Device Guardian* (formerly Device Tracker)

Eliminate time-consuming searches with this full-scale, cloud-based solution which gives entire teams visibility into device location. Give your teams everything they need to monitor, flag and recover devices.



Device Guardian Access Management* (formerly Zebra Access Management System)

Practically eliminate the time spent managing devices and devices access. With Device Guardian Access Management, you can see the real-time status of your devices—whether in service, charging or missing. Improve device utilisation for a higher return on investment and increase productivity by ensuring access to fully charged devices.

Guardian Cabinets and Cradle Locks** (formerly Intelligent Cabinets)

Easily and securely store and charge Zebra mobile computers, tablets and more. Together with the rest of the Zebra Guardian portfolio, you can create a complete solution to optimise how your enterprise mobile devices are stored, accessed, tracked and managed to harness the most efficient use of devices and workers.

- Consolidate and connect to maximise performance
- Protect devices with authorised-only security
- Five sizes to accommodate between 20 and 100 devices
- RF-friendly design and materials—devices won't lose Wi-Fi or mobile connection in the cabinet

* Available in Q2, 2025.

** Not available in all regions.





Industrial Printers

Zebra industrial printers are designed for harsh and demanding environments. With rugged durability and future-proof adaptability, our user-friendly barcode label and RFID printers are designed to provide 24/7 reliability. Don't compromise—choose Zebra for your high- to mid-volume applications.



ZT600 Series

Intelligence and industrial brawn

Industrial strength and full featured for every challenge.

- All-metal construction supports continuous heavy-duty performance with high throughput
- Best-in-class registration tolerance for micro-label applications
- 4- and 6-inch print widths*

INDUSTRY MARKET:



After implementing ZT200

Series industrial printers along with MC3300 rugged mobile computers, distribution centre workers have made fewer fulfilment and reporting errors and become faster in all phases of the distribution process.”

– Eduardo Cortez,
Distribution Centre Manager, Multicenter





ZT510

An ideal balance between performance and value with essential features for heavy-duty printing.

- All-metal construction supports continuous performance without throughput delays
- 4-inch print width

INDUSTRY MARKET:



ZT400 Series

Rugged durability, designed to grow with your evolving business needs.

- Built to handle a wide variety of media and applications
- Linerless, RFID and on-metal RFID options available
- 4- and 6-inch print widths

INDUSTRY MARKET:



ZT231

A feature-packed printer at a value-class price.

- Space-saving, compact design with bi-fold door
- Optional media handling, wireless and RFID
- 4-inch print width

INDUSTRY MARKET:



ZT111**

When labelling needs demand more than a desktop printer.

- Compact footprint
- Ideal for light industrial and commercial environments
- 4-inch print width

INDUSTRY MARKET:



Print Engines



ZE500 Series

OEM print engine for print-and-apply labelling applications.

- Maximise uptime with onboard analytics and tool-less printhead replacement
- High print speeds to keep up with fast-paced operating lines
- 4- and 6-inch print widths
- Optional wireless and RFID

INDUSTRY MARKET:



Ready to replace an existing printer? Select your current model in this tool to discover the new, innovative Zebra model designed to lower costs, elevate efficiency and ease IT management.

Zebra DNA for Printers lets you easily configure, manage, secure and maintain your printer fleet.

* For labels with a width between 6 and 8 inches, Zebra offers the 220Xi4.

** Available as ZT211CN in China; ZT211IN in India.



Desktop Printers

Zebra desktop printers are compact and simple to operate, and they offer the durability that your business demands for low to mid-volume printing. Don't sacrifice performance for savings; Zebra has a desktop printer at every price point, available in direct thermal or thermal transfer models, for all your barcode label, receipt, wristband and RFID applications.



ZD600 Series

Premium features and maximum performance

Invest in the best for years of quality and secure printing.

- Comprehensive range of factory and field-installable options and accessories
- Intuitive colour touch display and easy-to-use menu features
- 2- and 4-inch print widths
- Linerless, healthcare and RFID models available

INDUSTRY MARKET:



Your ability to print accurate, quality labels in a timely manner affects your ability to successfully track and manage all your workflows.





ZD400 Series

Elevated features, flexibility, reliability and security.

- Multiple media handling and connectivity options
- 2- and 4-inch print widths
- Healthcare and ribbon cartridge models available

INDUSTRY MARKET:



ZD200 Series*

Simple operation, basic feature set, exceptional value.

- Quality dual-wall construction
- Easy media loading
- 4-inch print width

INDUSTRY MARKET:



* Available as the ZD888 Series in China.



Mobile Printers

Zebra mobile printers increase employee productivity and accuracy by enabling portable printing of barcode labels, receipts and RFID tags at the point of application. We offer a handheld mobile printer at every price point for every industry, and accessories for a complete portable solution.



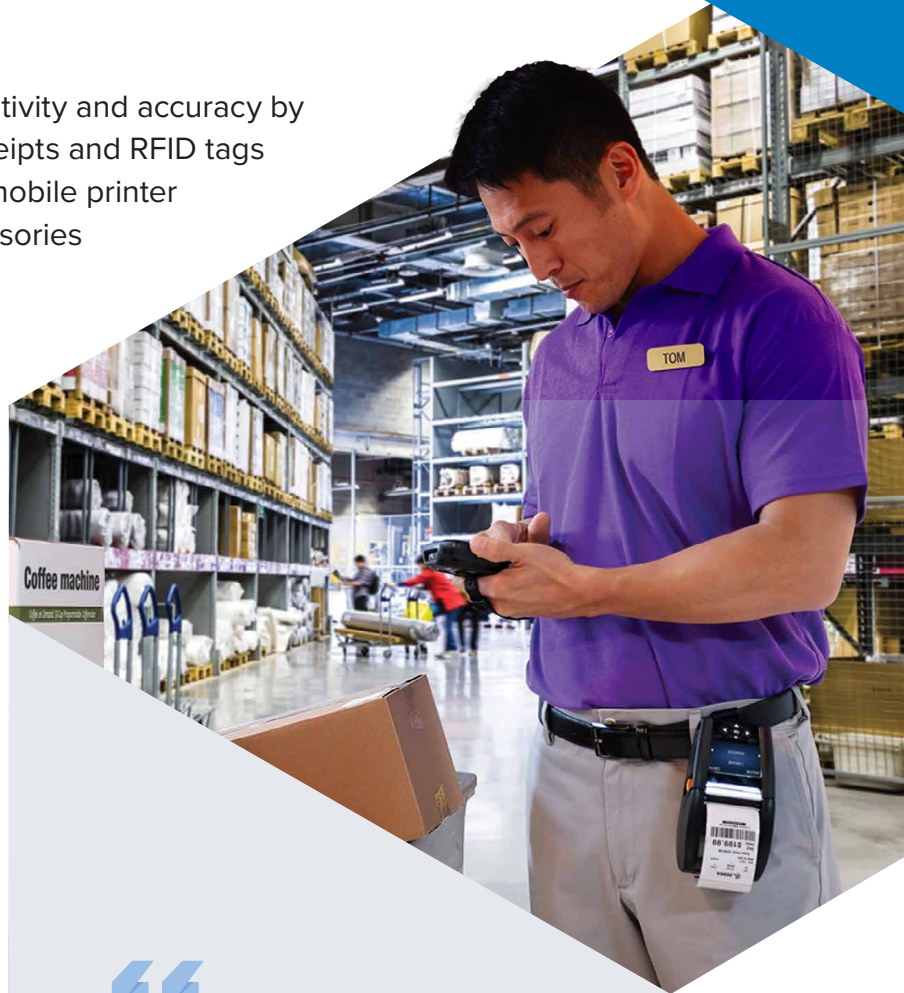
ZQ600 Plus Series

Zebra's most versatile mobile printer series

The latest wireless connections for fast, reliable and secure printing.

- Large colour display for easy configuration and operation
- The industry's first Wi-Fi 6 (802.11ax) mobile printer
- Superior battery power and power management with PowerPrecision and Power Smart Print Technology
- Linerless, healthcare and RFID models available
- 2-, 3- and 4-inch print widths

INDUSTRY MARKET:



Material handlers can combine fixed vehicle computers with mobile printers to help improve labelling compliance, item track and trace, and more extensive inventory management efforts, such as cycle "counts".

– Zebra Edge Blog Team





ZQ500 Series

The industry's most rugged mobile printer.

- High-duty-cycle receipt and medium-duty-cycle label printing on-the-go
- Fast print speed with up to 5 ips
- 2-year standard warranty (ZQ511/ZQ521)
- Linerless and RFID models available
- 3- and 4-inch print widths

INDUSTRY MARKET:



ZQ300 Plus Series*

Two lightweight yet durable designs to meet your business needs.

- Mid-range 2- or 3-inch printers for moderate receipt, label and linerless printing
- Multiple charging options available, including convenient USB charging
- Linerless models available

INDUSTRY MARKET:



ZQ200 Series**

Zebra's smallest and most affordable mobile printer.

- Compact and lightweight, yet durable and reliable
- Linerless model available***
- 2- and 3-inch print widths
- Receipt and label printing in multiple media widths when used with media spacers

INDUSTRY MARKET:



DON'T FORGET:

Zebra RFID and Barcode Labels and Tags

From synthetic materials to basic paper solutions, challenging environments to compliance, hard-to-label surfaces to easy-to-remove labels, or tamper-evident to tear-proof, we have more than **90** certified material options to meet your unique needs. With over **600** items in stock and extensive custom capabilities, we can provide a solution for virtually any application.

ZeroLiner Linerless Media

Zebra ZeroLiner Linerless solution, when used with Zebra's Linerless Printers, offers an eco-friendly labelling solution by eliminating backing paper, thus reducing waste and environmental impact. This collaboration enhances sustainability whilst improving efficiency and cost-effectiveness in label production and application.

* Available as ZR328 Plus in China.

** Not available in all regions. Available as ZQ120 Plus in India, ZR118 and ZR138 in China.

*** ZQ210 only.



Card Printers

Zebra card and badge printers make it easy to connect, create and print high-quality, durable cards for a variety of applications. Whether you're printing ID cards, hospitality badges or financial cards, Zebra printers offer the security, supplies and software you need for a full solution.



ZC300 Series*

Compact card printers that deliver it all

Easy setup with painless plug-and-play deployment.

- Direct to card single or dual-sided printing
- Multiple encoding and connectivity options
- Fits-everywhere design

INDUSTRY MARKET:



Zebra card printers

are designed to simplify all end-user touch points in order to create an intuitive, worry-free experience.”

– Curt Croley, Senior Director,
Innovation and Design,
Zebra Technologies





For more information, visit www.zebra.com or contact a sales associate.



ZXP Series 7

Fast and effortless card printing.

- Single or dual-sided printing
- Waste-free, single or dual-sided lamination

INDUSTRY MARKET:



Zebra cards, laminates and ribbons offer greater value and durability. Learn about the longevity and security benefits of Zebra's Long-Life Ribbon, available on select models in the ZC300 Series.



ZC10L

Edge-to-edge personalisation, rugged design.

- Single-sided dye sublimation printer
- Prints large, oversized cards and badges

INDUSTRY MARKET:



ZC100*

Compact size facilitates front-office deployments.

- Affordable and easy to use
- Direct to card single-sided printing

INDUSTRY MARKET:



CardStudio 2.0 and Digital ID

Easy-to-use card design and issuance software.

- Create any card design, from simple to sophisticated, single or double-sided, colour or monochrome
- Securely issue and update Digital IDs to complement printed cards

INDUSTRY MARKET:



* Three-year limited warranty.



Printer Accessories

Make Your Printers Even More Productive

Increase the functionality and longevity of your Zebra printers with our comprehensive selection of readily available parts and accessories for mobile, desktop and industrial models. From replacement batteries and RFID upgrade kits to carrying cases and connectivity options, we have everything needed to streamline workflows, reduce downtime, and adapt to evolving business demands across a range of print applications.



Batteries

Energy management is critical to keeping your workforce mobile and productive. Balance performance and power with efficient batteries and battery accessories. Zebra's long-lasting batteries power your mobile printers without limiting productivity. Available in both standard and extended packs to meet your different needs.

Chargers, Power Supplies, Cradles and Mounting

Zebra power adapters and chargers fully recharge a battery in just 2.5 to 5 hours, and they deliver the superior reliability and longevity you need to keep batteries in service. Choose between single and multi-slot battery chargers, charging cradles, wall chargers and on-the-road charging solutions.





Carrying and Protection Options

Ensure your printer is at hand when you need it and out of the way when it's not. These quality, custom-designed printer cases and covers make them easy to carry on your belt or over your shoulder. Plus, they're weather-resistant and add an extra layer of protection when they're bumped around.



Cables and Other Accessories

For speed, reliability and precise data transmission, depend on Zebra cables. They are manufactured to the highest standards to be durable and to deliver seamless, timely and hassle-free connectivity and communication. Don't trust just any cable, because when you need to be connected ... you need to be connected.



Printheads

Genuine Zebra printheads will keep your operations up and running. Don't wait until it's too late to replace your printheads—order your replacements today!



Mounting Kits

Zebra offers a variety of printer mounting kits that add flexibility to your printer installation and use case. Securely attach a printer on a wall, on a vehicle, or create a custom self-service printing kiosk solution.





Printing Supplies

Print Confident. Print Secure. Print Zebra.

Printing supplies can affect everything from printhead lifespan to operational efficiency; that's why at Zebra we produce our own line of thermal printing supplies to ensure consistent, optimised performance in Zebra printers. With Zebra Certified Supplies, customers get exceptional service, thermal printing expertise and consistent outstanding quality.

Zebra Barcode Labels, Tags and Receipt Paper

Our diverse range of labelling solutions includes paper labels for standard applications; synthetic labels for durable, long-lasting performance; and innovative options like IQ colour labels for on-demand colour printing. We offer both direct thermal and thermal transfer labels as well as speciality adhesives for challenging surfaces and removable needs. Our synthetic labels resist abrasion, moisture and chemicals, featuring unique properties like tamper-evidency and extreme temperature resistance. Zebra's tags and labels ensure that all your printer supply needs are met with reliability and clarity.

Hospital Bracelet and Patient ID Wristbands

Our hospital bracelet and patient ID wristbands offer unmatched durability and comfort, ensuring accurate patient identification and enhancing safety. Featuring thermal and RFID technology, these wristbands streamline patient management, reduce errors and improve overall care efficiency.

Event Wristbands

Zebra's durable, versatile guest wristbands empower staff to focus on creating memorable moments, not reprinting and rebanding. Our thermal barcode and RFID wristbands streamline cashless POS, manage entry seamlessly, reduce ticket fraud, simplify transactions and track guests' last known locations.



Ribbons

Our thermal transfer ribbons are designed to deliver high-quality durable prints across a variety of label materials, ensuring clear and long-lasting barcodes and text. Available in wax, wax/resin and resin formulations, they cater to different application needs.

ZeroLiner Linerless Printing Solution

Zebra offers more than just printers and labels. The Zebra ZeroLiner Printing Solution is a complete linerless solution that can help you to support your applications and guide you to achieving cost-benefit outcomes including printer uptime, minimising waste and achieving sustainability goals, a cost saving on transportation, and freeing up storage.



Electronic, Visual and Printable Environmental Sensors

Zebra's cutting-edge portfolio of environmental sensors re-imagines supply chain visibility, offering intelligence that goes beyond conventional monitoring. Our innovative temperature indicators and data loggers deliver valuable data, enabling accurate temperature checks and effective monitoring of environmental conditions throughout the supply chain. From ready-to-use indicators to thermal printable indicators and electronic data loggers which enable wireless monitoring, our sensors help to analyse temperature variations, enabling informed decisions relating to your cold-chain logistics.

Electronic Sensors

ZS300 Electronic Temperature Sensors Solution wirelessly monitors environmentally sensitive products so that you can analyse excursions and act upon them in real time.

- High-performance Bluetooth connectivity automates data collection
- Easily and securely integrates into existing systems
- IP67 rated
- Battery shelf life of 1 year
- LED display status

INDUSTRY MARKET:



Ready-to-Use Indicators

Gain visibility into the temperature exposure of products with a simple card or self-adhesive indicator.

- Available on rolls or as a TransTracker card
- Response temperature options
- Ascending or descending indicators
- Irreversible, single use
- No activation required

INDUSTRY MARKET:



Printable Indicators

ZeOn-Demand printable indicators offer an easy-to-read environmental indicator on a thermal label, providing insight into a product's exposure to environmental conditions.

- Customisable size and material
- Response temperature options
- Ascending or descending indicators
- Irreversible or reversible, single use
- Activation required for some indicators

INDUSTRY MARKET:



RFID High Temp Indicator

High-heat indicator within a printable thermal label.

- Readable by existing UHF RFID infrastructure or mobile computing devices
- Irreversible
- Single use
- No activation required

INDUSTRY MARKET:



Use our Zebra Sensor Selector to discover the ideal sensor for the environmental condition visibility that you need.



In healthcare, there's no room for error. Zebra's healthcare technology solutions help you to streamline care delivery with enhanced workflows and reduced workarounds so that you can quickly locate staff and critical equipment and ensure patient safety and reduce errors.

Mobile Computers and Tablets

Equip your nurses, clinicians and non-clinical healthcare workers with devices specifically designed for busy healthcare facilities. Made to be durable to hold up to rigorous, frequent cleaning and disinfection.



HC50/HC55 Healthcare Mobile Computers

Improve efficiency and patient outcomes for clinical healthcare workers

Purpose-built to deliver all the features which clinical healthcare professionals need to improve efficiency, accuracy and the quality of patient care and patient outcomes.

- Advanced 6-inch FHD+ edge-to-edge display
- Fast wireless connectivity (Wi-Fi 6E, 5G)
- True Hot Swap battery
- Dedicated emergency alert button



Zebra healthcare mobile computing

is designed to enhance efficiency, accuracy and patient care outcomes for all healthcare workers.



TC52ax-HC Mobile Computer

With a large, 5-inch Full HD display, optimised voice capabilities and a disinfectant-ready design, the TC52ax-HC is made to deliver a performance edge and better patient care for clinicians.

- Dedicated emergency alert button
- True Hot Swap battery
- Healthcare-friendly white illumination LEDs with green aimer
- Wi-Fi 6



HC20/HC25 Healthcare Mobile Computers

Perfectly designed to meet the needs of all your healthcare workers.

- Advanced 6-inch FHD+ edge-to-edge display
- Fast wireless connectivity (Wi-Fi 6, 5G)
- Dedicated emergency alert button



ET40-HC/ET45-HC Rugged Healthcare Tablets

Built to meet the demands of healthcare and your budget.

- Android OS, 10-inch screen, integrated scanner
- Emergency alert programmable button
- Advanced medical-grade disinfectant-ready plastics with fully rugged consumer-style design
- Fast wireless connectivity (ET40-HC: Wi-Fi 6; ET45-HC: Wi-Fi 6 and 5G)



Zebra mobile computers help the Paracelsus Group achieve a dynamic, digital healthcare operation.



We're delighted

with the success of this project. It's improving care for our patients and helping our teams work more efficiently."

— Anjali Sherlin Menezes,
Acting Head of Purchasing
Division, Paracelsus Group





Scanners

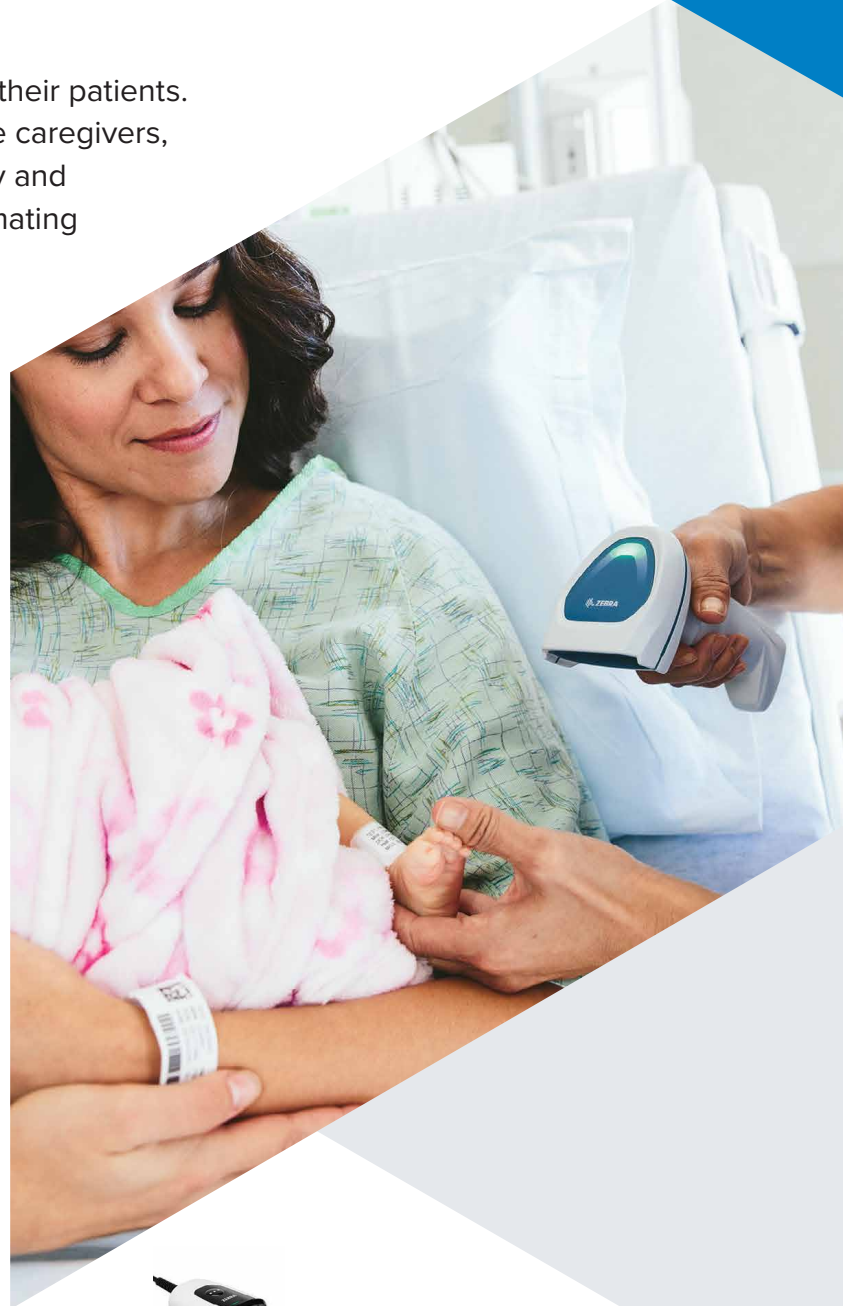
Zebra scanners simplify caregivers' interactions with their patients. Scanning applications, though routine in nature to the caregivers, help to prevent medical errors, improve patient safety and increase productivity. With imaging technology automating many administrative requirements, caregivers can focus on the needs of the patient.



DS9900 Series Hybrid Handheld/ Hands-Free 1D/2D Scanner for Labs **Built for life in the lab**

Improve workflow efficiency and accuracy with a hybrid presentation imager built for the lab.

- Hybrid design offers handheld and hands-free flexibility
- Elevated electronics protect the device from casual spills
- Disinfectant-ready housing can handle regular sanitising



DS55 Series for Labs Fixed Mount Scanner

Proven scanning performance in a compact, fits-anywhere design built for the lab.

- With IP54 sealing and a purpose-built design with no exposed openings, the DS55 Series allows for safe and frequent wipedowns
- Innovative 3-in-1 mount accessory is a computer display mount, wall mount and presentation stand all in one



DS8100 Series for Healthcare 1D/2D Scanner

Seamlessly integrate into existing workflows.

- Corded and cordless models
- Disinfectant-ready housing can handle regular sanitising



CS60-HC Companion 1D/2D Scanner

Easily converts between corded and cordless, hands-free and handheld operation.

- One device can be used for multiple workflows
- Disinfectant-ready housing can handle regular sanitising



DS2200 Series for Healthcare 1D/2D Scanner*

Dependable, affordable and purpose-built for healthcare.

- Corded and cordless models
- Disinfectant-ready housing can handle regular sanitising



DS4600 Series for Healthcare 1D/2D Scanner

A versatile healthcare scanner that does more for the whole hospital.

- Corded model
- Disinfectant-ready housing can handle regular sanitising



* Not available in all regions.



Printers

Efficiently manage workflows and minimise mistakes with thermal printers which help to strengthen patient care from admission to discharge. Zebra healthcare printers are purpose-built with medical-grade, disinfectant-ready materials that can be safely cleaned between each use.



ZQ610 Plus-HC

Zebra's most versatile mobile healthcare printer

Reduce the risk of errors in specimen collection with premium mobile printing at the point of care.

- Comprehensive remote management, configuration and security tools
- Superior battery power and power management
- Latest wireless connections for fast, reliable and secure printing
- 2-inch print width



Zebra printers,

labels and wristbands help healthcare providers to label patient samples, track medical supplies, optimise patient identification and manage inventory.



ZD621-HC

Premium features and maximum performance.

- Full-colour LCD touch display and intuitive user interface
- Healthcare compliant power supply
- RFID capability
- 4-inch print width



ZD611 RFID

Compact with premium features, RFID capabilities and unmatched security.

- Print and encode RFID wristbands
- Full-colour LCD touch display and intuitive user interface
- 2-inch print width



ZD421-HC

Advanced features and ease of use.

- Option cartridge model for fool-proof ribbon loading
- Healthcare compliant power supply
- 4-inch print width



ZD411-HC

The “fits anywhere” printer.

- Multiple options (peeler, cutter, Ethernet, battery)
- Healthcare compliant power supply
- 2-inch print width



ZD510-HC

Wristbands printed by a specialist.

- Easy media loading cartridge for fast-paced environments
- Ultra-compact, quiet operation



ZQ620 Plus-HC

Latest wireless connections for fast, reliable and secure printing.

- Improve specimen labelling and accuracy
- Large colour display for easy configuration and operation
- 3-inch print width

Zebra certified supplies are designed specifically for Zebra healthcare printers and tested for durability in healthcare environments.





Handheld RFID Readers

Track, trace and inventory assets in real time. Choose from sleek handhelds, hands-free devices, rugged form factors and RFID sleds. Here are just a few ways to handle RFID easily and accurately.



RFD40 RFID Premium and Premium Plus Sleds

Faster. Smarter. Future-proof.

The RFD40 UHF RFID Premium and Premium Plus Sleds build on the same great features of the standard model and offer better support for third-party smartphones by providing a 1D/2D barcode imager,* Bluetooth and NFC. Integrated Wi-Fi allows for over-the-air device management.

INDUSTRY MARKET:



RFD40 RFID Standard Sled

Work more efficiently. Optimise cycle-counting with industry-best read rates, read range and increased battery capacity. Most importantly, it connects to current and future Zebra mobile computers, so you get a future-proof device.

INDUSTRY MARKET:



Did you know?

Zebra MotionWorks sensors throughout every NFL stadium track RFID tags placed in players' shoulder pads, charting individual movements within inches.





EM45 RFID Enterprise Mobile

Ultra-thin and lightweight—two in one for personal productivity—smartphone ergonomics, built-in RFID and enterprise functionality in one device.

INDUSTRY MARKET:



TC53e-RFID Mobile Computer

The newest model in Zebra's popular TC5 Series, this device offers an integrated short-range UHF RFID and is designed to be more sustainable and meet the evolving mobility needs of today's frontline workers.

INDUSTRY MARKET:



RFD90 Ultra-Rugged UHF RFID Sled

Deliver higher volumes at greater speeds with these ultra-rugged sleds built for the most demanding environments, featuring industry-best read rates and read ranges. Connect directly or wirelessly to Zebra mobile computers and third-party smartphones. Integrated Wi-Fi 6 capability allows easy over-the-air device management.

INDUSTRY MARKET:



WS50 RFID Android Wearable Computer

Give your disconnected task workers more tools to complete more types of tasks, boosting collaboration, productivity and workflow efficiency. Worn on the wrist, back of hand or two fingers, this powerful ergonomic device provides an integrated host-free UHF RFID reader, an optional external antenna, a barcode scanner which can capture virtually any barcode in any condition, two-way radio instant push-to-talk capabilities, and more.

INDUSTRY MARKET:



MC3330xR Series UHF RFID Readers

Bring a new level of comfort, speed, ease of use and accuracy to your RFID applications. Superior RFID read performance and receiver sensitivity enable fast and accurate capture of even the most challenging RFID tags. Built for maximum uptime with a large touch screen and physical keypad, yet lightweight with the right ergonomics for all-day comfort.

INDUSTRY MARKET:



DS9908R RFID Scanner

Close the supply chain loop. Read RFID-tagged merchandise at the point of sale for up-to-the-minute inventory tracking, or RFID tags on laboratory assets and specimen samples for improved laboratory management. The DS9908R is a hybrid handheld/hands-free scanner which offers best-of-breed barcode scanning with RFID reading capabilities in a single platform.

INDUSTRY MARKET:



*RFD40 Premium Plus only.



Fixed RFID Readers and Infrastructure

Achieve maximum asset visibility across your enterprise. Zebra RFID Array Readers provide visibility into the pinpoint location of all your tagged assets, including those on the move.



G3 Boats, a division of Yamaha Motors, implemented an RFID solution which would provide insight into its manufacturing process.



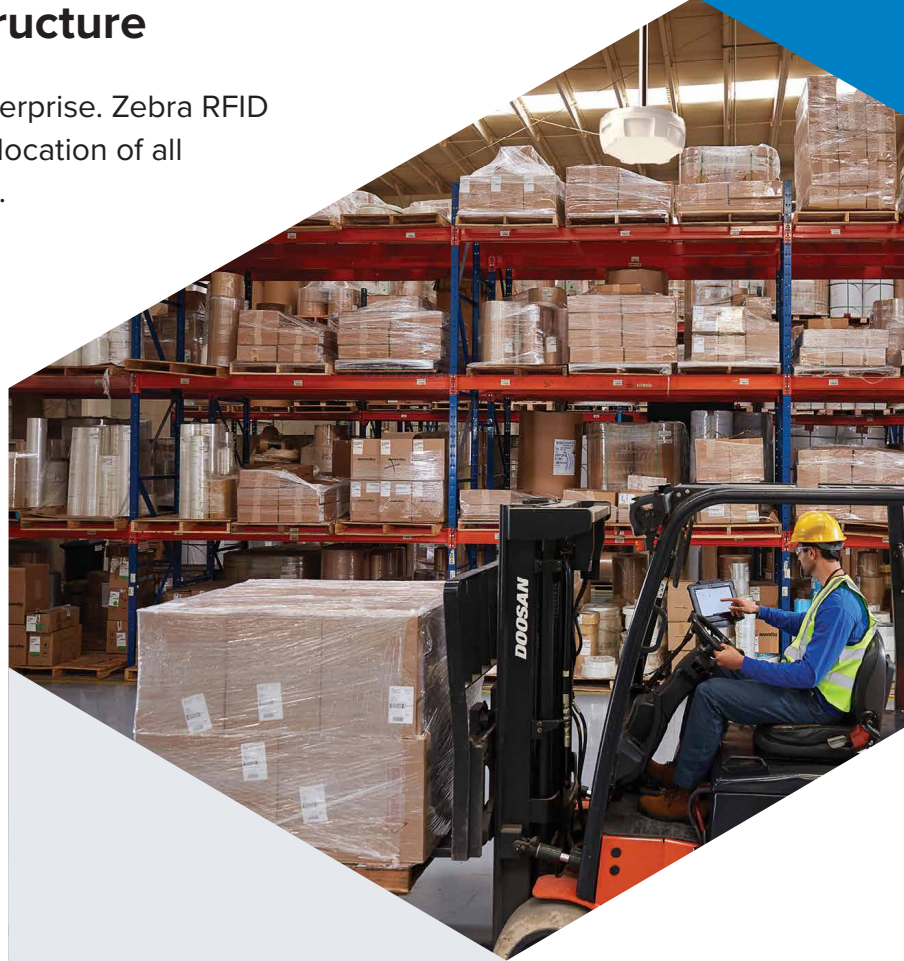
ATR7000 RTLS Reader*

Redefine operational efficiency with superior, affordable real-time locationing using passive RFID.

See where your inventory, forklifts, equipment, workers and more are located. Know when they're on the move and the direction they're moving in. Identify, locate and track items in real time—and receive real-time alerts to improve compliance and loss prevention.

- Proprietary RFID technology
- Wide-angle multi-polarised antenna
- Beam steering for pinpoint accuracy
- Industry-best real-time tracking

INDUSTRY MARKET:



RFID does not require line-of-sight or a light source for tags to be read, a dramatic advantage over previous technologies, such as barcodes. A reader can discover what's in a box's entire contents without opening it, or pinpoint a specific item in an area containing hundreds of diverse components.





For more information, visit www.zebra.com or contact a sales associate.



ZXR90 Ultra-Rugged Fixed RFID Reader

Rock-solid reliability against punishing conditions.

INDUSTRY MARKET:



FX9600 Fixed RFID Reader

Top-of-the-line performance for high-volume and rugged environments.

INDUSTRY MARKET:



FX7500 Fixed RFID Reader

The small enterprise reader, big on speed and accuracy.

INDUSTRY MARKET:



FXP20 POS Fixed RFID Reader

Maximum performance without compromise.

INDUSTRY MARKET:



ST5500 Transition RFID Reader*

Know what's entering and exiting your facility.

INDUSTRY MARKET:



* Not available in all regions.



Integrated RFID Portals*

Manage and monitor inventory, control costs, and optimise workflows with fast, reliable, highly automated updates when tagged assets pass through a portal or chokepoint. Specialised antennas reduce erroneous reads and sustain a highly accurate read rate.



Zebra's integrated

RFID portals were designed with front-line users, workplaces and workflows in mind, engineered for ease of use, reliability and ruggedness.

Transition RFID Portal*

Reduce manual scanning

Used primarily at dock doors, these integrated portals can reduce the need for human intervention and manual scanning at common chokepoints.

INDUSTRY MARKET:





For more information, visit www.zebra.com or contact a sales associate.



Wall-Mount RFID Portal*

Fits right in

These fully enclosed, plug-and-play units mount easily beside doorways and hallways near storage rooms, offices and warehouses to provide versatile RFID tracking for multiple applications.

INDUSTRY MARKET:



Zebra RFID Reader Management lets you deploy, configure and monitor a diverse fleet of Zebra fixed RFID readers from one consolidated application, regardless of location.



Fixed RFID Tunnel*

Improved conveyor throughput

Built especially for inline conveyor operations, these units automatically read tagged assets as they move along the line and through the tunnel, improving workflow accuracy.

INDUSTRY MARKET:



Integrated RFID Table*

Tabletop accuracy

RFID antennas mounted underneath the table are specially configured to read items placed on the surface in any orientation.

INDUSTRY MARKET:



Our new integrated RFID portals will provide organisations with the confidence to know where their assets are at any point in time and help increase the accuracy and speed of receiving, put away, consume and resell."

— Matt Seltz

Vice President of ALT Customer Success, Zebra Technologies



Mobile RFID Pallet*

Elevated reading

Ideal for areas with elevated racking and high tag volumes, these pallet-mounted RFID readers are designed to travel through storage aisles by forklift, collecting accurate information quickly and safely.

INDUSTRY MARKET:

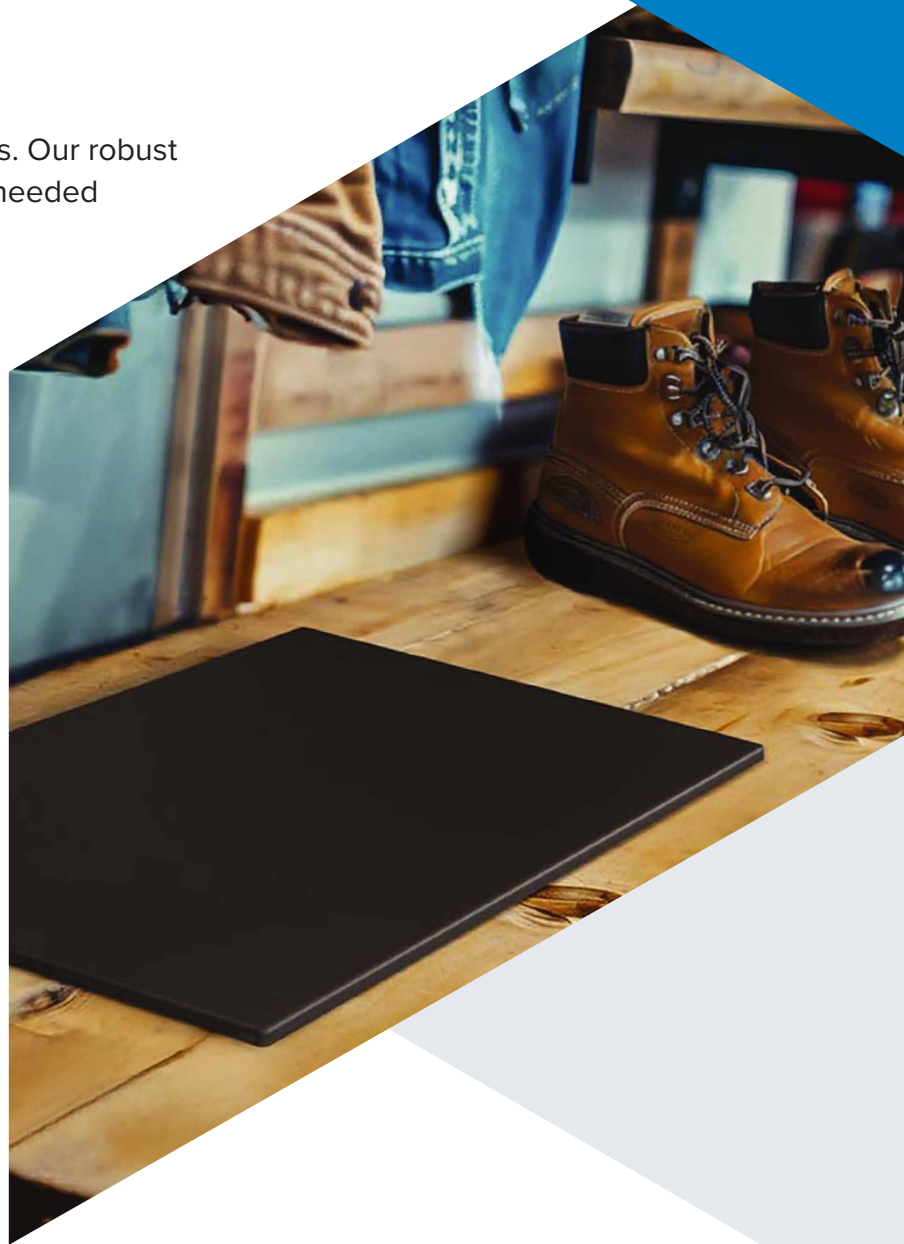


* Not available in all regions.



Antennas

Quickly and accurately track inventory and assets. Our robust antennas offer the high performance and range needed for high traffic and precision.



AN440 RFID Antenna

Large area coverage in any environment

Get the capacity and range you demand for reliable RFID tag reading. A good-looking, rugged, general-purpose area antenna, the AN440 is designed to perform exceptionally in all environments, indoors and outdoors.

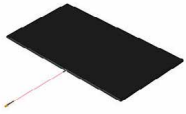
INDUSTRY MARKET:



We're rolling out the RFID system, including Zebra readers and antennas, to all of our facilities in order to improve warehouse and inventory control. When it's all in place, we'll see thousands of dollars in annual savings, and we expect to achieve ROI on the RFID system in less than two years."

— John Underwood,
Engineering Manager, Southeastern Container





AN660 Low-Profile RFID Antenna

Super-sleek form factor with high-gain performance for greater accuracy.

INDUSTRY MARKET:



AN670 Low-Profile RFID Antenna

Discreet form factor with near-field radiation for tighter zone control.

INDUSTRY MARKET:



AN510 Ultra-Rugged RFID Antenna

Ultra-rugged and low profile for use indoors and outdoors.

INDUSTRY MARKET:



SN5604 RFID Reader and Antenna*

Track inventory and mobile devices.

INDUSTRY MARKET:



AN520 Ultra-Rugged RFID Antenna

Small form factor and high performance.

INDUSTRY MARKET:



SP5504 Point of Sale RFID Antenna*

Track inventory in your POS lanes or will-call areas.

INDUSTRY MARKET:



AN610 Slimline RFID Antenna

Sleek. Discreet. Rugged.

INDUSTRY MARKET:



SR5502 Transition Point RFID Antenna*

Track inventory in the backroom from arrival to departure.

INDUSTRY MARKET:



AN620 Slimline RFID Antenna

Slimline, ultra-low profile.

INDUSTRY MARKET:



AN480 RFID Antenna

Global flexibility for all enterprises.

INDUSTRY MARKET:



AN650 Ground RFID Antenna

Rugged and ultra-low profile.

INDUSTRY MARKET:



AN720 RFID Antenna

Compact indoor/outdoor antenna for customer-facing environments.

INDUSTRY MARKET:





RFID Printers/Encoders

Your solution depends on reliable data. Zebra offers the industry's widest range of printers which accurately encode RAIN RFID labels, tags and cards where and when you need them. Build your solution on RFID data you can trust.



ZT400 Series RFID Industrial Printers

Rugged durability, designed to grow with your evolving business needs.

Print and encode RFID tags or labels to gain a competitive edge with great tracking abilities, deeper visibility and enterprise insights.

- Adaptive encoding technology simplifies RFID setup
- Optional on-metal RFID version enables metal asset tagging

INDUSTRY MARKET:



RFID tagging is growing in popularity across many sectors as organisations seek ways to better track and trace inventory and assets.





For more information, visit www.zebra.com or contact a sales associate.

ZEBRA PORTFOLIO GUIDE | 2025



ZT610, ZT620 and ZT231 RFID Industrial Printers

These printers keep your operations running 24/7 in the harshest environments and the most demanding RFID applications.

INDUSTRY MARKET:



ZD611 and ZD621 RFID Desktop Printers

Premium features, maximum performance and unmatched security in an easy-to-use compact printer.

INDUSTRY MARKET:



ZQ630 Plus, ZQ511 and ZQ521 RFID Mobile Printers

Our premium mobile printers can print at the point of application, making them a convenient and efficient solution. They are user-friendly for workers and easy for IT to integrate and manage.

INDUSTRY MARKET:



ZE511 and ZE521 RFID Print Engines

Zebra's enhanced RFID-ready OEM print engines are ideal for high-volume industrial applications for manufacturing, shipping, receiving and more.

INDUSTRY MARKET:



ZXP Series 7 and ZC300 Series Card Printers

Whether you need high performance or a compact size with groundbreaking simplicity, Zebra UHF RFID card printers deliver.

INDUSTRY MARKET:



RFID Labels and Tags

Zebra has the largest number of in-stock, on-demand RFID printing supplies featuring the newest generation of RFID chips to support faster inventory audits and longer read ranges. With Zebra's RFID label manufacturing capabilities and range of inlays, we can help customise how you maximise the benefits of your RFID application.



RFID solutions are ultimately about data, and it's the role of the printer/encoder to make sure that your tag data is encoded accurately and efficiently."

– Michael Fein,
Director, Product
Management, RFID &
Advanced Locationing
Technology





Reader Software

You don't have to be an expert to set up and optimise Zebra RFID readers. Our tools help you every step of the way—easily configure and deploy your RFID readers without complications or delays.

RFID Reader Management

The easiest way to deploy, manage and scale passive RFID

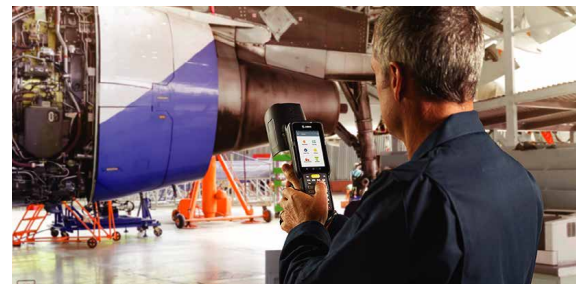
Deploy, configure, manage and monitor every cloud-ready Zebra passive RFID reader in your enterprise from a single, consolidated application.



123RFID Desktop

Make RFID deployments as easy as 1-2-3

Our free, intuitive wizard presents easy to understand options in drop-down menus, radio buttons and sliders. Use built-in help and how-to videos to find answers to your questions.



123RFID Mobile

Get RFID deployment mobility

Leverage 123RFID mobility for more flexible deployment and easier access to our free, intuitive wizard.



Network Connect

Seamless, secure connections to programmable logic controllers (PLCs)

Connect Zebra FX9600 Fixed RFID Readers to the most widely used Industrial Ethernet protocols and other standard networks without additional conversion hardware.



Software Development Kits (SDK)

Lower IT burden, easier RFID implementation

Zebra RFID SDKs provide a powerful set of APIs to take full advantage of handheld reader performance, functionality and versatility and offer support for Android, iOS, Windows and Xamarin.





RFID technology

has reached a tipping point. Whilst barcodes are incredibly useful and as cost-effective as it's possible to be, RFID can be more versatile and efficient in taking automation to the next level. And affordable RFID tags are quickly becoming commonplace at every step of the supply chain.”

— John Hughes,
Director of Software
Product Management,
Zebra Technologies





Location Technologies

Zebra offers a full portfolio of best-in-class hardware options for capturing location data to satisfy a large variety of requirements for range, accuracy and precision.



Ultra-Wideband Solutions

Zebra delivers real-time visibility with Ultra-Wideband (UWB) solutions—a real-time location system (RTLS) that allows for a myriad of asset management applications. Accurately track personnel and equipment indoors and outdoors. The UWB system provides the lowest cost of ownership in the industry by improving installation ease, visibility, scalability, performance, asset tracking and tag management.



Bluetooth Low Energy Devices

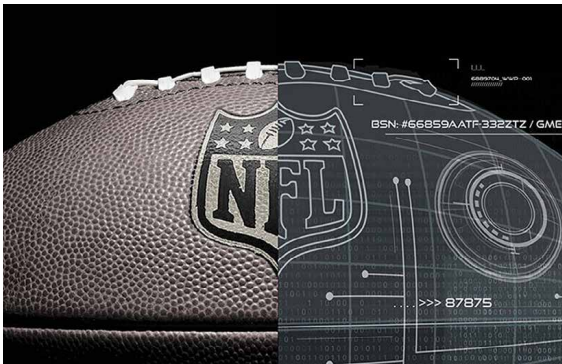
Our Bluetooth beacons and bridges are quickly and easily deployed, available in multiple form factors and price points, and can be used for asset tracking and other location solutions.



Hyperconnected distribution centres are the new reality. Zebra's recent vision study found that **43%** of organisations plan to implement real-time location systems (RTLS), enabled in part by RFID tagging and Bluetooth technology such as beacons. These systems give distribution centre managers a bird's-eye view of operations, allowing for real-time cross-checking of an asset's location.

Zebra MotionWorks Sport™*

When you can track everything—and put insights derived from real-time data immediately to work—you can accomplish anything. Automating visibility to your critical assets allows you to ramp up productivity, boost efficiency and grow your business—by delineating data that arms your enterprise with actionable insights.



Total Visibility in Sports

Use real-time performance statistics to scout for players and create winning strategies.

- Optimise athlete performance by helping trainers to keep athletes at peak performance
- Strengthen coaching and training with a consistent, data-forward analysis method
- Engage fans by broadcasting player statistics on television, mobile engagement and in stadiums



* Not available in all regions.



Fixed Industrial Scanners

Zebra's fixed industrial scanners automatically track and trace items from production to distribution. Easily keep track of every part and package with a model for every application. Upgradeable features grow as you do to meet the evolving needs of your business.



Explore how Zebra's industrial automation solutions help to increase throughput and accuracy while lowering costs—perfect for tackling today's operational challenges.



GS20 Connectivity Gateway

Increase production line throughput with next-gen scan tunnel architecture

Combines advanced decoding technology with rugged durability to ensure accurate package tracking and sorting in fast-paced production environments.

- Connect to up to 16 cameras to support a variety of package sizes and label orientations
- Built-in support for Rockwell, Siemens, Mitsubishi and Omron programmable logic controller (PLC) devices



FS10 Fixed Industrial Scanner

Easily track and trace items as they move through warehouses and distribution centres with this compact, fits-anywhere, plug-and-play scanner.

- Enjoy first-time, every-time data capture with Zebra-exclusive features
- Connect to the USB port of a workstation, laptop, tablet or any other host device



FS20 Fixed Industrial Scanner

Zebra's smallest networkable fixed industrial scanner integrates high-quality scanning to track and trace every item moving through production, storage and fulfilment.

- Integrate easily into PLCs or host networks using multiple connectivity options
- Reduce setup complexity and cost with support for Power-over-Ethernet (PoE)



FS40 Fixed Industrial Scanner

Broad capabilities meet complex barcode capture requirements and can be tailored to specific needs, with flexible options like decode range, illumination, connectivity and power.

- Isolate production data and store images in the cloud or on a local server with two available Ethernet ports
- Capture up to 16 different images of a single item—each with its own unique setting for focus, exposure, gain, illumination control and more—with ImagePerfect+



FS42 Fixed Industrial Scanner

Maximise performance with advanced imaging, expanded on-board memory and an integrated NPU for faster, smarter data processing.

- Ideal for demanding tasks such as deep-learning-based OCR, anomaly detection and high-speed barcode scanning
- Unlock greater operational insight and future-proof systems by easily adding on software licences for advanced machine vision capabilities



FS70 Fixed Industrial Scanner

Completely customisable scanner facilitates challenging track-and-trace applications. Choose from a variety of C-mount external lens and lighting options to achieve the working range and field of view the application and environment require.

- Address complex imaging requirements with a range of customisable options for depth of field, reading distance and lighting requirements
- Built-in Ethernet/IP with Add-On Profile, PROFINET and other network protocols enables painless integration with common PLCs or host systems

Aurora Focus™ Software

On-device software for Zebra's FS scanners, Aurora Focus™ comes ready-made for barcode reading and verification, OCR, and presence/absence vision inspection.

- Configure scanners easily to perform tasks like barcode comparison and quality assessment with intuitive job creation tools
- Seamlessly integrate with enterprise systems and leverage advanced features like ImagePerfect+, Golden Image Compare, Object Locate and more

Enhance production line visibility by providing real-time data capture and analysis, helping to eliminate errors, streamline processes and boost overall operational performance.





Smart Sensors and Cameras

Reduce production defects, increase throughput and improve efficiency with Zebra's smart sensors and cameras. Cutting-edge machine vision technology delivers unmatched precision to warehouse or manufacturing operations. Whether your production line needs simple image capture or complex inspections, Zebra has a smart sensor or camera that's perfect for the job.

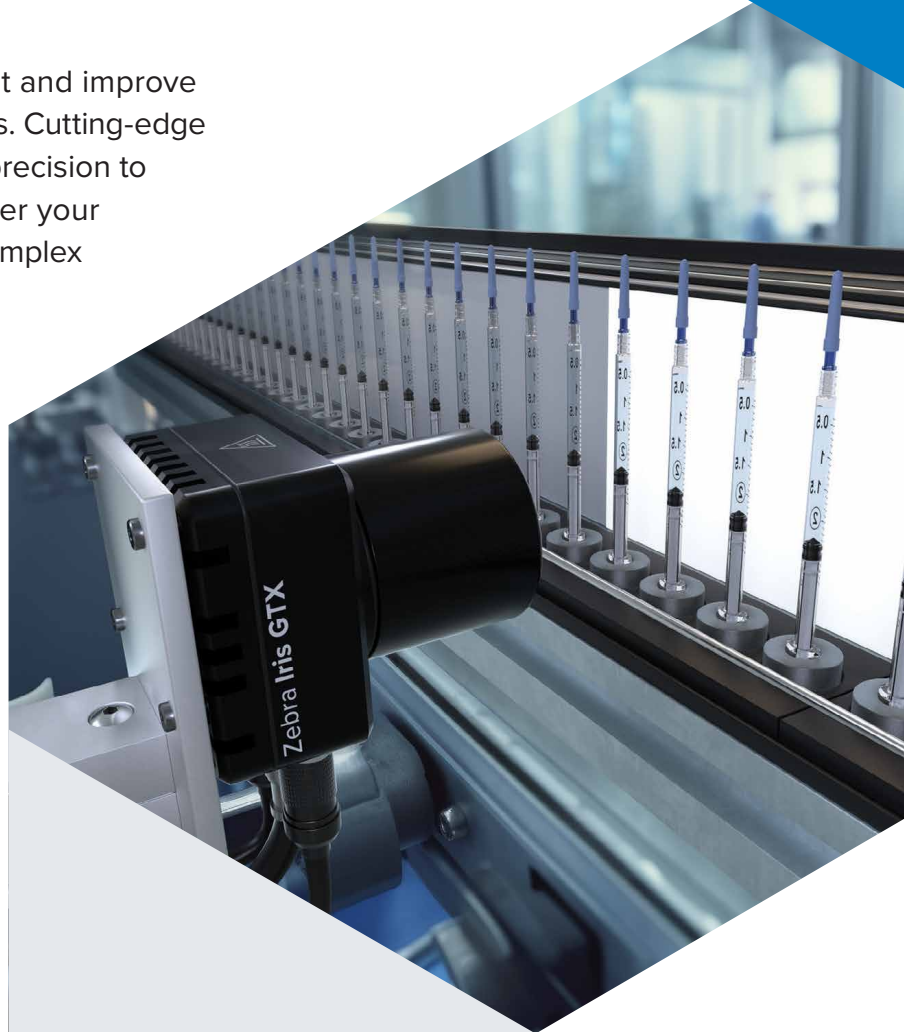


Iris GTX

Execute traditional machine vision tasks and deep learning inference on this edge IoT device

Fast high-resolution image sensing, efficient dual-core embedded processing, and comprehensive I/O capabilities in a rugged smart camera.

- Perform real-time, on-device image acquisition and analysis to accelerate decision-making and optimise throughput
- Pair with Aurora Design Assistant software to form an all-in-one, scalable vision solution



Machine vision

provides enhanced visibility into physical operations by delivering images and actionable intelligence to automation systems.



VS20 Machine Vision Smart Sensor

Multiple connectivity options easily integrate into a PLC or host network, enabling primary machine vision applications to feed all the processes that drive the business.

- Integrate easily with PLCs or host networks via Ethernet and serial ports
- Add machine vision tools or support for new barcode symbologies with a simple software upgrade



VS70 Machine Vision Smart Camera

Whether there is a need for a wide-angle lens to capture large parts, a zoom lens to inspect distant components, or a specialised lens for precise measurements, this smart camera is completely customisable to any need.

- Reduce cost, training and management time, as well as the need for external peripherals, with Zebra-exclusive features
- Support any external C-mount lens and any external lighting solution



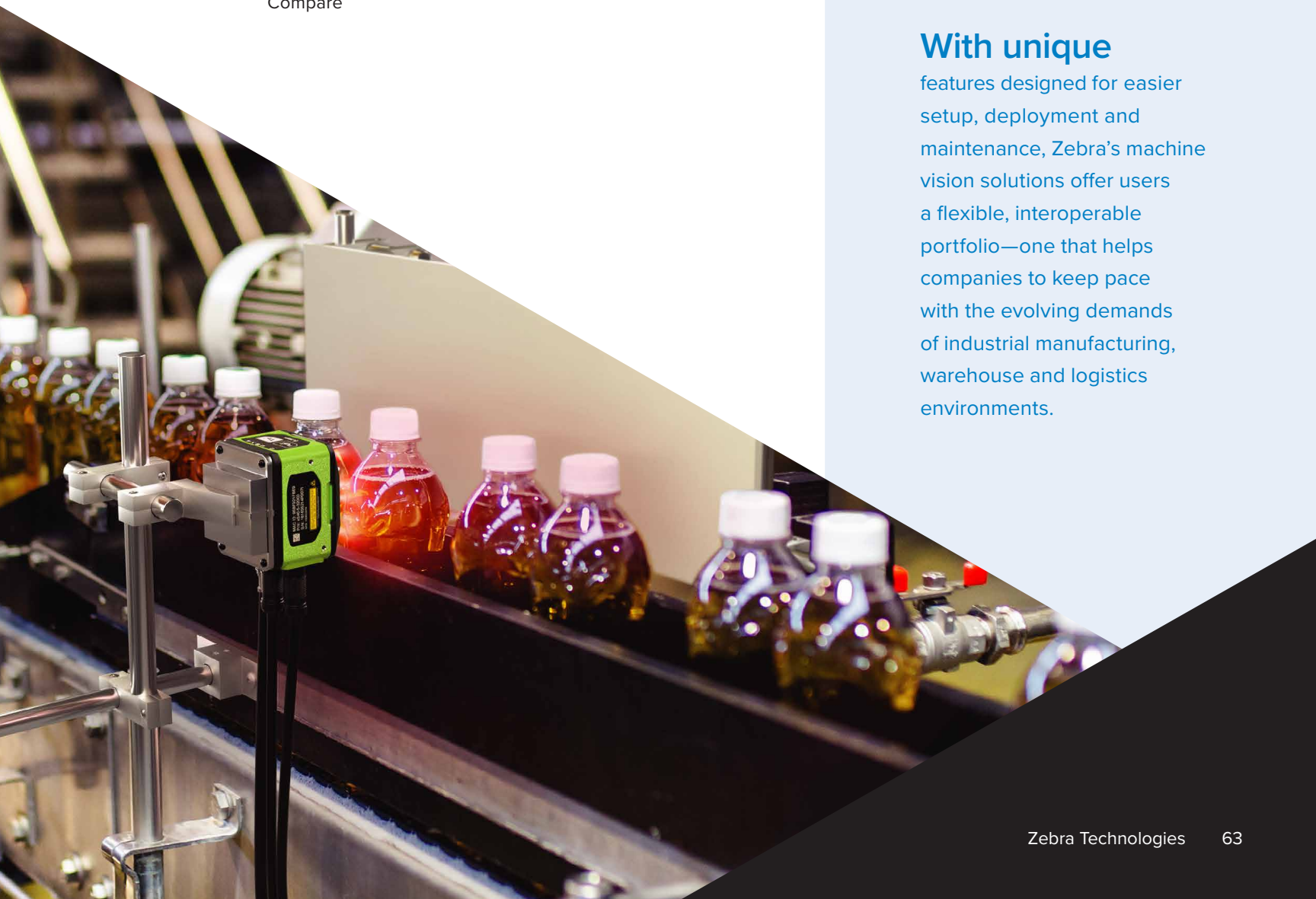
VS40 Machine Vision Smart Camera

Support a variety of inspection applications on the production line by choosing from a range of complementary lenses, illumination, connectivity, power and filters.

- Expand application functionality and improve error-proofing with up to nine programmable I/O ports
- Minimise downtime by immediately diagnosing and correcting the source of any image degradation with Golden Image Compare

With unique

features designed for easier setup, deployment and maintenance, Zebra's machine vision solutions offer users a flexible, interoperable portfolio—one that helps companies to keep pace with the evolving demands of industrial manufacturing, warehouse and logistics environments.





3D Sensors

Zebra's high-fidelity 3D profile sensors boast unique algorithms which automatically generate reliable 3D data in the form of profiles, depth maps or point clouds to suit any application requirement.



AltiZ Series

Featuring single-camera or dual-camera single-laser designs which reduce scanning gaps and voids and deliver exceptionally high 3D reproduction fidelity.

- Operate two cameras in tandem for maximum quality, or alternate for twice the scanning output
- Work with Zebra or third-party vision software thanks to a standard GigE Vision interface



3S Series

Delivering accurate, real-time 3D imaging for both static and moving objects, these sensors are designed to enhance quality control and inspection in high-speed manufacturing and logistics environments.

- Capture ultra-precise 3D images at high speeds to identify fine details and anomalies
- Integrate seamlessly with Aurora Design Assistant or Aurora Vision Studio software for streamlined deployment and advanced automation of vision applications

Industrial Vision Controllers

Embedded PC technology, expansion capabilities, optimised size and sturdiness mean Zebra's industrial vision controllers effectively watch over one or more production lines. Pair with add-in boards to handle image acquisition, network interface and processing offload demands for single high-speed or multi-camera imaging installations.



Supersight

High-density industrial computing platforms accommodate up to four computers and a broad range of image-acquisition interfaces into a standard 4U enclosure, ideal for the factory floor.

- Scale system operations over one to four system host boards (SHBs) to optimise performance
- Split acquisition and processing over one, two or four compute clusters for optimised expansion capabilities



4Sight Series

Desktop-level performance and substantial expansion capabilities for single high-rate or multi-camera imaging and machine vision applications. Zebra's industrial vision controllers are also suitable for traditional machine vision tasks and deep learning inference.

- Tackle the most demanding imaging applications with powerful embedded processors
- Connect to multiple cameras and boards

Machine Vision Cameras

These colour and monochrome cameras are built for multi-camera industrial inspection and automation applications.



CV60 Series

High-resolution machine vision cameras deliver outstanding frame rates.

- Pair with Zebra vision controllers or frame grabbers
- Keep critical inspections running optimally with cameras purpose-built for the factory floor
- GigE and USB 3.0 models available



Frame Grabbers

From cost-sensitive entry-level models to boards integrating flexible high-rate acquisition and pre-processing capabilities, or a range of inputs, interfaces and data rates, Zebra frame grabbers provide all the features necessary to make critical decisions with confidence and accuracy.



Rapixo Series

Multi-input CoaXPress and Camera Link frame grabbers support the highest resolutions and frame rates currently available on the market.

- Connect to multiple high-performance cameras simultaneously
- Offload host computer of optional image processing demands via an FPGA device



GevIQ

Smart network interface cards (NICs) handle generic GigE Vision acquisition offload at speeds up to 25 Gigabits/s per port, ensuring a more versatile alternative to custom-built or proprietary solutions based on 10+ GbE.

- Acquire high-bandwidth streams from two 25 GbE ports, with GigE Vision packet processing performed directly onboard
- Aggregate multiple GbE cameras for up to 32 input sources



Clarity UHD

Multi-format, multi-input video capture cards handle onboard multi-stream H.264 encoding to optimise video transmission and storage.

- Capture SD, HD and UHD video formats
- Handle multiple video sources of up to eight HD or two UHD streams



Radient eV-CL

High-performance frame grabbers handle image capture from a single Camera Link device and connect to high-performance Camera Link cameras to best achieve imaging needs while simplifying overall setup.

- Optimise multi-camera setups
- Simplify connectivity and maintain maximum throughput at extended cable lengths



Concord PoE

Multi-port Gigabit Ethernet adapters interface with one or more GigE Vision cameras, handle command and streaming protocols, and provide power over a single standard connection.

- Interface to one or more GigE Vision cameras supporting PoE
- Trigger multiple cameras simultaneously with hardware-assisted Trigger-over-Ethernet (ToE)

I/O Cards

Indio cards provide industrial I/O and communication capabilities which allow users to turn any PC running Aurora Imaging Library or Aurora Design Assistant vision software into a genuine vision controller.



Indio

Multi-input I/O cards with hardware-enabled real-time synchronisation with automation devices.

- Range of industrial I/O with eight discrete inputs and outputs per board
- Synchronise in real time via a dedicated hardware assisted mechanism





Zebra Aurora™ Software Suite

The Zebra Aurora suite of industrial automation software enables users of all experience levels to solve their track-and-trace and vision inspection needs. Experienced users will appreciate how easy it is to develop, refine and customise jobs, while first-time users can take advantage of interactive, step-by-step guidance to develop powerful applications for a wide range of industries.

Zebra Aurora™



Read this white paper to learn how machine vision can help to improve automation, quality control and operational efficiency, with practical insights on deploying advanced vision technologies.

Aurora Focus

Aurora Focus empowers Zebra's VS20, VS40 and VS70 smart cameras with on-device software for advanced machine vision tasks, including deep-learning OCR and presence/absence inspection.

- Leverage one powerful software platform to control all enterprise-wide automation solutions
- On-demand Zebra-only features like ImagePerfect+, Golden Image Compare, Object Locate and more

Aurora Imaging Library

With deep code-level customisation capabilities for machine vision projects, Aurora Imaging Library is a programming library with an extensive collection of tools for image capture, processing, analysis, annotation, display and archiving.

- End-to-end coverage with utilities to optimise performance, shorten ramp-up time and improve outcomes
- Single, portable API can move between interfaces or OS to best protect the original investment

Aurora Vision Library

Designed for experienced programmers proficient in vision applications, Aurora Vision Library provides sophisticated functionality presented in programming language.

- Totally customisable software affords complete control over vision applications
- Save time with code-generator capabilities to streamline programming projects

Aurora Design Assistant

A flowchart-based, drag-and-drop platform for building machine vision applications, Aurora Design Assistant delivers helpful templates to speed up development and bring solutions online faster.

- Hardware-independent environment supports branded and third-party smart cameras, vision controllers and PCs
- Communicate actions and results to automation equipment in real time with discrete I/Os and supported protocols

Aurora Vision Studio

Create, integrate and monitor powerful machine vision applications without the need to write a single line of code with Aurora Vision Studio software.

- Includes a set of over 1,000 proven and ready-to-use filters to support a simple, three-step workflow
- Hardware agnostic, it also includes 3D capabilities for complex vision tasks





Environmental Responsibility and Sustainability

Zebra takes environmental responsibility seriously, and places sustainability at the heart of our product portfolio. These are some of the ways we're delivering on the promise of sustainability that we've made to our customers through purpose-built hardware, software and cloud analytics.

Reducing Carbon Footprints

Our approved science-based targets (SBT) help our customers lower their carbon emissions. We prioritise carbon reductions using data from product life cycle assessments.

- **50%** ten-year absolute carbon emission reduction at Zebra sites.
- **15%** carbon emission reduction in supplier manufacturing and customer product use by 2030.

Lower Energy Use

We're helping our customers reduce electricity use.

- **~94%** of our eligible products meet ENERGY STAR® requirements.
- Our data capture products reduce energy use with LED and integrated ASID designs.
- Our external power supply surpasses international requirements with a Level VI efficiency rating.
- Zebra's updated 5-slot charging cradle consumes **18%** less energy when charging a TC58 mobile computer.

Purpose-Driven Design

We deliver on performance and positive results.

- Accessible designs and ergonomic form factors support our customers' inclusion priorities.
- Our broad product portfolio and solution ecosystem drives sustainability objectives.
- Several new Zebra products have implemented recycled plastics, including TC5Xe Series Mobile Computers. TC5Xe is designed and constructed with 25% post-consumer recycled plastics—and without many major environmental toxins, such as mercury and PFO/PFOAs.
- Zebra has 4 handheld computers and 11 tablets registered to EPEAT.
- Zebra has implemented Forestry Stewardship Council (FSC) certified paper and cardboard packaging for several new products.

Extending Product Life Cycles

Ruggedised designs, software security and proactive battery replacement enable longer life cycles and greater returns on investment, while end-of-life reuse and recycling helps minimise our environmental impact.

- Interchangeable designs such as shared charging cradles and batteries encourage reuse and enable a more circular economy.

Minimal Packaging

We help customers achieve zero-landfill targets through multipack and eco-packaging.

- The PS30 packaging utilises fully recyclable corrugated materials and is **100%** biodegradable.
- Simplifying packaging, such as **17%** slimmer touch computer packaging.
- Encouraging customer adoption of multipacks and returnable containers.

Printing Supplies

Innovative engineering helps reduce landfill waste.

- Cartridges are recyclable or contain PET-1 ocean-bound plastic.
- RFID inlays and label offerings are paper-based.
- Linerless media and label materials contain post-consumer waste.



The Zebra MP7000 scanner consumes up to **60%** less power than competing devices



Zebra AMRs*

Power your productivity and empower your workforce with Zebra Robotics Automation (ZRA), a robust, versatile, cloud-based portfolio of autonomous mobile robots and intelligent software. Zebra autonomous mobile robots move independently across your facility to fulfil orders faster and automate time-consuming and repetitive material movement tasks so that your skilled workers can focus on more meaningful work.

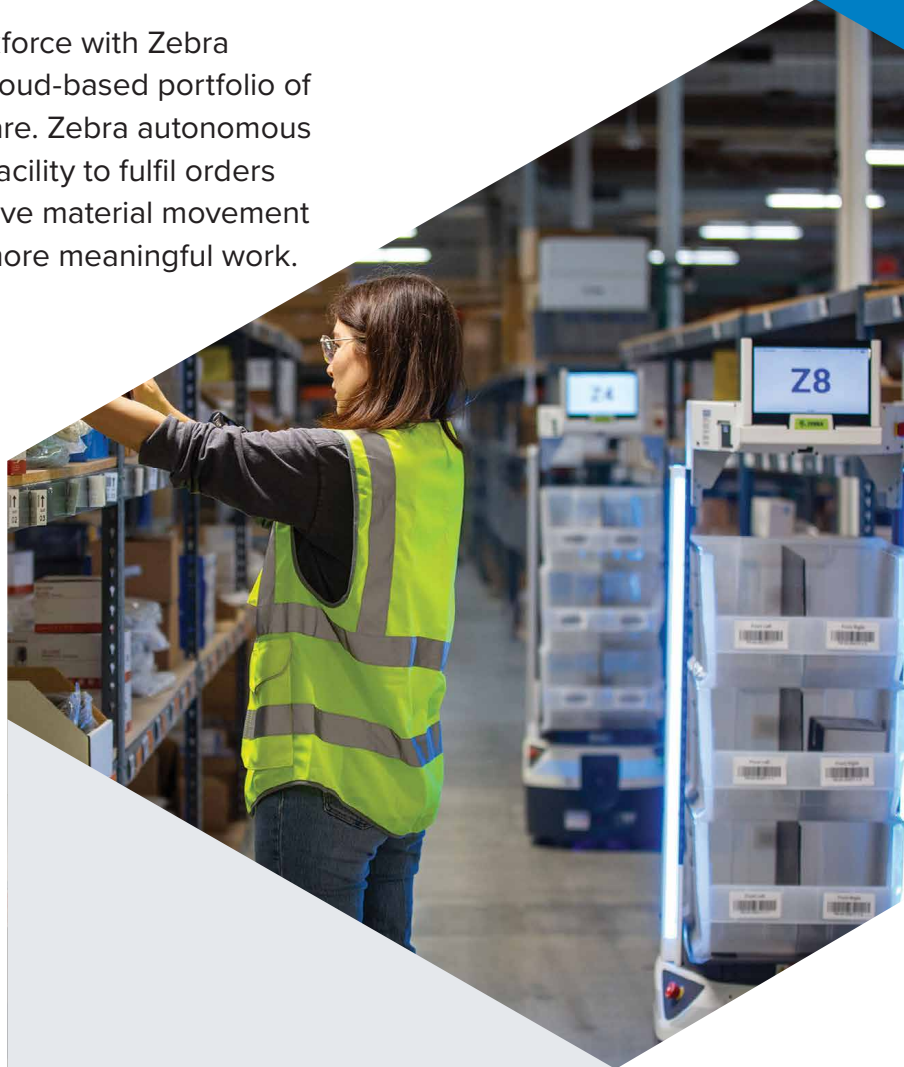


AMRs provide many solutions across multiple industries. In fulfilment and distribution centres, they enable optimised picking to help fill orders faster. In manufacturing, AMRs can be used for moving raw materials, work-in-process, parts, tools and finished goods around the facility.



Zebra Flex*

Dynamically orchestrate workers and robots to increase pick productivity across e-commerce orders to drive down the cost per unit picked. Adjustable shelves accommodate a variety of totes, bins and boxes, and supports item and batch picking with a highly configurable picker interface. The Flex AMR integrates with existing WES and WMS installations.



Zebra Symmetry Fulfilment

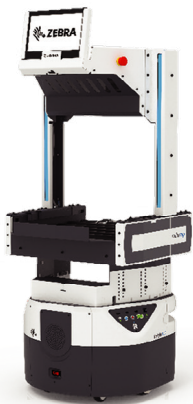
Orchestrate the picker path with a team of robots for a directed workflow and unparalleled efficiency. Strike a balance between throughput and cycle time, optimising every second of every workflow. Achieve the lowest cost per unit without sacrificing quality or performance.



Zebra Connect*

Use any web-enabled or integrated device such as Zebra tablets or mobile computers to execute a workflow or request a pick-up. Zebra Connect will automatically move to the pick-up area and autonomously transport it to the selected drop-off area. Upon arrival, Zebra Connect automatically detaches from the cart and is ready for the next task, keeping workers productive in their zones.

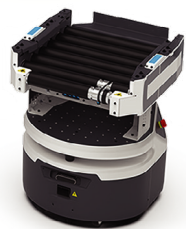
- Available in three sizes, cart options support a wide range of workflows.
- Simple setup and control for employees through handheld devices or fully configured schedules.



Zebra Roller Series*

Zebra Roller and Roller Guide help to elevate efficiency in conveyor, sortation and AS/RS driven environments by bridging islands of automation. The adaptable design and autonomous navigation enable seamless loading/unloading to conveyors or from manual or automated pick locations without human intervention.

- Utilising the Roller series in workflows, long stretches of fixed conveyor can be replaced to free up space for storage or value-added operations.
- Roller Guide's integrated touch screen, barcode scanner and smart LEDs easily communicate status, destination and jobs to be done to your workers so that they can efficiently communicate.



Zebra Shelf*

This all-in-one AMR can transport a wide range of goods from bins to totes to packages or parts. Its fully configurable shelving system and built-in touch screen make it easy to integrate into any given workflow.

Symmetry Software*

Zebra Symmetry™ is a cloud-based software platform for your AMR fleet and automation workflows. Accessible from anywhere, Zebra Symmetry delivers simplicity, performance and ease of use for any operation that needs AMRs deployed. Effortlessly add robots and modify workflows with a few clicks of a button for rapid ROI.



Prior to our AMRs, which drop precisely where directed, an operator on a piece of material handling equipment (MHE) might forget the exact delivery location, or they might see that a stage is overflowed and drop it one or two stages over. This doesn't happen with our AMR deliveries."

— Sandra Grogg,
Dorman Products OPEX Team





Zebra Workcloud™

How can you increase customer satisfaction and sales in the face of known constraints and future uncertainty? Optimise your most valuable assets—your employees, inventory, time and funding. Zebra Workcloud was purposefully developed to engage and retain your workforce, foster enterprise collaboration, and master inventory management—from improving forecasting to streamlining replenishment. By optimising your people and products, your customers can find what they want easily, and employees can spend more time helping customers, delivering better, more personal customer experiences.

Each suite provides modular solutions that you can leverage based on your company priorities. Designed to enable frontline workers, market-leading Workcloud suites let you scale across your organisation at your own pace, supporting your modernisation journey.

With Zebra as your partner, you gain confidence, expert guidance and support. You deploy faster, with less risk and far more assurance that your most valuable resources are performing at their peak.

Workcloud Workforce Optimisation Suite

Leverage advanced forecasting to increase frontline engagement and tighten alignment between staffing and customer demand, dynamically adjusting plans in real time to solve unexpected challenges and changing needs. Remove confusion and accelerate task execution by automatically directing employees to focus on what's most important based on real-time events and signals. Empower your workforce by giving employees more control over their schedules and daily work for greater flexibility and work-life balance. Your employees will be happier, more productive and in turn more loyal. What's more, your customers will reap the benefits of an agile and empowered front line.

Workcloud Scheduling

Optimise budgeting, forecasting and scheduling to empower your employees and manage workforce costs. Ensure that you have who you need, where and when you need them, whilst providing employees with flexibility and control over their schedules. Share resources across locations, departments and roles, aligning schedules with customer traffic, skills, certifications and employee preferences.

Workcloud Timekeeping

Keep your employees and your operations compliant whilst optimising timekeeping. Track time entry and labour to control costs and maintain compliance with labour laws and regulations. Prioritise employee safety with touchless clocking in/out. Maximise productivity with accurate attendance records and real-time visibility across the enterprise.

Workcloud Task Management

Simplify work and streamline task execution for a more efficient, higher-performing operation. Automate task assignments to keep workloads balanced and completion rates high. Automatically direct staff to tackle the highest-priority assignments. With real-time visibility into job status and completion rates, managers can manage by exception. Empower employees to complete their work with confidence and succeed in their roles with a clear understanding of tasks and directives.





For more information, visit www.zebra.com or contact a sales associate.

ZEBRA PORTFOLIO GUIDE | 2025

Workcloud Enterprise Collaboration Suite

Keep the front line connected and ready to do their best work. Give employees the ability to work in multiple roles and across departments via profiles preloaded with tasks and protocols. Your employees will have a direct line to ask for assistance, promptly tending to customers and answering their questions for a better experience that satisfies modern customer expectations.

Workcloud Sync

Empower a more collaborative workforce with Zebra Workcloud Sync, a unified and secure solution purpose-built for the front line. From one single application, equip your front line with push-to-talk, voice and video calling, multimedia messaging and task functionality, making information and co-workers immediately accessible. Utilise real-time communication to engage and encourage your workers to be at their most efficient and effective.



Read success stories of how customers across industries used Zebra Workcloud to improve operations and customer experience.

Zebra Workcloud™

Zebra Workcloud

has native interoperability with Zebra devices, creating operational efficiency and elevating product availability by optimising your most valuable resources: your workforce, inventory, time and funding.





Zebra Workcloud (Cont.)

Workcloud Inventory Optimisation Suite

Satisfy customers and maximise profit potential by ensuring that your inventory aligns with shifting demand and is both accurate and available for purchase. With our suite, you can keep the right mix of inventory on the shelves for higher turnover and fulfilment at less cost. You'll have advanced analytics to improve visibility, merchandising compliance and loss prevention activities. No more hunting for data. Instead, you will automatically pinpoint leaks across all channels and eliminate inaccuracies with automated scanning. That's how you optimise inventory in a modern operation.

Workcloud Actionable Intelligence

Discover cost savings in your data and instantly communicate corrective actions to your front line to regain lost revenue and boost sales. With AI-generated insights, you can identify and correct inventory anomalies, close more investigations with less effort, and automatically assign and track tasks, assessing their monetary impact on your operation. Reduce shrink and improve inventory accuracy when you consolidate disparate data streams and root out loss at the source.

Workcloud Inventory Visibility

Move away from third-party inventory services and achieve up to 50% in cost savings when you equip your own employees with self-directed inventory counting technology. With meticulous guidance at every step, Workcloud Inventory Visibility makes it easier to plan and execute inventory events, and drives better inventory accuracy and visibility.





30%
improvement in
forecast accuracy



2 to 5%
margin improvement



10-point
increase in sell-through

Workcloud Demand Intelligence Suite

Experience the power of the Workcloud Demand Intelligence Suite, leveraging cutting-edge AI and ML (machine learning) technologies to accurately forecast and analyse demand to meet various challenges across your organisation. With advanced analytical capabilities, the suite enables businesses to anticipate consumer trends to make informed decisions for driving revenue and customer satisfaction and capturing more market share.

Workcloud Forecasting & Analysis

Empower transformation with no-code/low-code interfaces and a library of proven algorithms designed to address retail use cases across forecasting, demand sensing, optimisation and more. Configure science to meaningful business value whilst providing analysis tools that unify demand intelligence for easier consumption.

Workcloud Pricing & Allocation

Optimise in-season execution to maximise visibility, mitigate risks and drive organisational collaboration. AI maximises your omnichannel ROI across pricing and placement decisions to drive consumer adoption, resulting in increased profitability and greater consumer satisfaction.

Workcloud Inventory Ordering

Stay ahead of industry trends and achieve remarkable precision in inventory ordering and execution for on-time fulfilment, reduction of out-of-stocks, and alignment to consumer demand for your allocated shelf space. Drive perfect orders aligned with best-in-class forecasting to reduce lost sales, returns and waste.





Maximise Your ROI With Zebra Services

Embarking on a technology transformation can be complex and costly. Zebra Services is here to help you to minimise risks and accelerate your journey. Our robust portfolio ensures that your Zebra devices, software and solutions are expertly built, efficiently managed and quickly adopted by your team. Trust us to streamline your launch and enhance the value of your investment.*

Zebra OneCare™ Maintenance Plans

Enhance your Zebra hardware purchase with our Maintenance Plan, offering live-agent support, swift repair turnaround and accidental damage coverage. Benefit from OS updates, LifeGuard™ security and efficient repair status management. Enjoy streamlined commissioning, battery maintenance and expedited shipping for seamless, uninterrupted operations.**

**Zebra
OneCare™**

Zebra VisibilityIQ™ Foresight

Optimise your operations with our Visibility Services, providing comprehensive insights into device inventory, utilisation and performance. Access crucial battery statistics, track repair status and ensure device readiness. Forecast seasonal demands and predict potential issues, ensuring seamless productivity and minimising downtime.

**Zebra
VisibilityIQ™
Foresight**

Zebra Professional Services

Maximise efficiency with our Professional Services, seamlessly integrating into existing processes to accelerate business outcomes and realize ROI sooner. Benefit from our Discover, Design and Build approach, ensuring smooth integration and deployment. Receive comprehensive training to enhance adoption and drive success.

**Zebra
Professional
Services**

Zebra Device Managed Services

Enhance your Zebra OneCare™ plan with Device Managed Services. Our experts manage your devices daily, ensuring optimal performance with 24/7 support. Benefit from consistent software and security updates, a dedicated contact for service delivery, and continuous improvement, freeing your IT staff for critical tasks.

**Zebra
Device Managed
Services**

Circular Economy*

Zebra is committed to responsible innovation and creating a better, greener future. The Circular Economy initiative aims to revolutionise the way that technology is produced, used and disposed of. This includes initiatives such as refurbishment, buybacks and recycling, which can help to extend the life cycle of Zebra devices and minimise environmental impact.



Circular Economy Program

Buy Back | Refurbish | Recycle

* Service availability, service feature and/or repair turnaround time may differ by country. Please contact your Zebra sales representative for details.

** VisibilityIQ OneCare available for mobile computers and scanners only.

UMD Value Add:

Design & Manufacture

- IoT devices and interfaces
- Cables
- Modify products
- Mechanical design and assembly

Source

- Data capture and ICT products and from our agencies
- Systems Integration

Professional Services

- Engineering
- Software
- Deployment
- Support

Full Stack Solution Provider

- Data Carriers (barcode, RFID, sensors)
- Edge devices and gateways
- Own and manage PCI-DSS compliant Data Center
- Middleware and Cloud Application Broker
- Software: cloud, mobile and embedded applications
- Design, deploy and managed services

UMD RFID Services:



RFID Site Surveys



RFID Tag Selection,
Printing, Programming
and Testing



Design and
Construction of RFID
Systems and Portals



Cloud and
Edge Software



Proof of Value Trials



RFID Mobile Devices.
Mobile Device
Management

UMD RFID Benefits For Real-Time Tracking And Productivity:

- Seamless end to end data acquisition
- Streamline inventory management
- Centralised cloud services. Distributed stock inventory and audit functionality
- Ability to track, trace and locate product
- Continuous visibility via frequent RFID stocktakes
- Stocktake accuracy and reduced human error



**UNIQUE
MICRO
DESIGN**
...Engineering IoT Solutions

 **ZEBRA**